



### **Oversight and Governance**

Chief Executive's Department  
Plymouth City Council  
Ballard House  
Plymouth PL1 3BJ

Please ask for Jamie Sheldon  
T 01752 668000  
E [democraticservices@plymouth.gov.uk](mailto:democraticservices@plymouth.gov.uk)  
[www.plymouth.gov.uk](http://www.plymouth.gov.uk)

Published 11 August 2025

## **CABINET – PRESENTATION PACK**

Monday 11 August 2025  
2.00 pm  
Council House, Plymouth

## **Cabinet – Presentation Pack**

**10. Meadow View Update:**

**(Pages 1 - 10)**

# Meadow View



## New Combined Day and Respite Service

# Current provision



Two older services situated within neighbourhoods that are not easily accessible and do not promote easy community inclusion.



# Consultation/Engagement



Consultation, engagement and co-production are key priorities within the life of this exciting project.

## **The conception of project**

- We consulted with customers and their families about current services
- We reviewed feedback from families of those people in children's services about the future needs of their children
- We spoke with a range of stakeholders about our plans for their feedback
- We explored locations that would best meet the needs of those people using the service whilst considering increased community links.

## **To date we have:**

- Undertaken public consultation
- Undertaken consultation with customers, families, professionals and staff teams

## **We have plans to**

- Hold regular user consultation and updates
- Hold regular parent/carers forums to update and seek views
- Set up time delay camera on site for Plymouth residents to view during build period
- Have dedicated space (on site) for customers to use safely during build period



# New Service Provision



**£13,282,300 Investment**



A Modern, purpose-built day service and respite provision with a value of 13 million pounds, replacing our current provision within the city

Providing daytime activities for more than 60 people with learning disabilities and complex needs.



# New Service Provision



Page 5

In support of the council's ambition of reductions in carbon emissions, the building will have a much higher energy efficiency rating than the existing buildings and will incorporate superior insulation, solar PV, air source heating, triple glazing. We successfully secured Climate Emergency Investment Funding (£469,300) to enable us to exceed the council's minimum planning requirement. The landscaping plans will improve the biodiversity of the site, with the planting of 50+ new trees, wildflower garden, raised flower beds, pollinator-friendly ornamental shrub planting.

# Meadow View



Page 6



7 bedrooms and 7 self-contained apartments providing planned short breaks and emergency accommodation to people and their families.

- A focus on person centred care
- Increased opportunities to support improved independent living skills to support a person with the next stage of their adult lives
- Improved facilities to support ILS including spaces where fixtures and fittings are "rise and fall" to enable those with a variety of physical disabilities to be able to participate fully



# Benefits



---

A modern building with the ability to meet the needs of people with complex needs

---

Increase independence, education and opportunities for employment for adults with learning disabilities

---

A centre of excellence for the care and support of adults with learning disabilities and a place in which other individuals of groups can source advice

---

Set within an existing community with parkland and green spaces, on well used public transport links and close to the city centre to maximise community participation and engagement for those using the service

---

Providing individuals and carers with more flexible options for breaks through the day, evenings and weekends

---

A local service which aims to provide support to individuals in crisis without the need for them to be moved out of the city

# Facilities



A range of activity spaces for users as well as possible space for members of the public to utilise

Pottery room and kiln – ability to make pottery items and sell locally

Independent Living Skills kitchen and apartment designed to promote more user involvement

2 more robust apartments to support people that are in crisis and need a more of a dedicated safe space



# Facilities

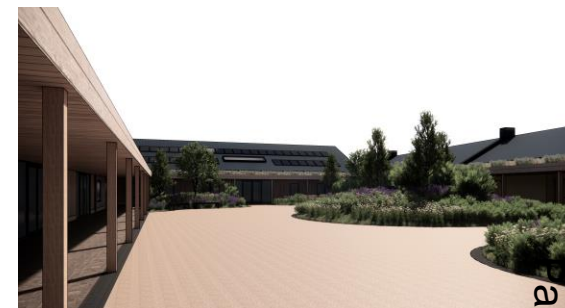


Cycle hub providing accessible bikes for users and members of the public

Changing places (specially build toilets for people with a range of physical needs)

Modern Sensory Room and Sensory Garden to enable relaxation or promote engagement

A more appropriate space that enables independence, promotes inclusion, supports person centred care and strives to maximise choice



age 9



# Timeline for Project



## Timeline for project

The current timeframe for completion of this project is the end of **July 2026**.

The contractor (**Devon Contractors**) begin on site during August with launch event being held on the 5<sup>th</sup> August

The current buildings being used to provide day and respite care will be released once the new service at Meadow View is operational.



### Phase 2: Construction & Service Specification

- Contractor setting up site (July 2025)
- Main works start on site (18 August 2025)
- Practical completion (July 2026)

### Service Specification

- Options Appraisal Paper for considerations (August 2025)