



Oversight and Governance

Chief Executive's Department

Plymouth City Council

Ballard House

Plymouth PL1 3BJ

T 01752 305155

www.plymouth.gov.uk/democracy

Published 21/09/23

Delegated Decisions

Delegated Executive/Officer Decisions

Delegated Executive and Officer decisions are available at the following link -

<https://tinyurl.com/ms6umor>

Cabinet decisions subject to call-in are published at the following link - <http://tinyurl.com/yddrql6>

Notice of call-in for non-urgent decisions must be given to the Democratic Support Unit by 4.30 pm on Thursday 28 September 2023. Please note – urgent decisions and non-key Council Officer decisions cannot be called in. Copies of the decisions together with background reports are available for viewing as follows:

- on the Council's Intranet Site at <https://modgov/mgDelegatedDecisions.aspx>
- on the Council's website at <https://tinyurl.com/jhnax4e>

The decision detailed below may be implemented on Friday 29 September 2023 if it is not called-in.

Delegated Decisions

I. Councillor Mary Aspinall, Cabinet Member for Health and Adult Social Care:

I.1. Direct Award of Contract to Shared Lives South West

(Pages 1 - 22)

EXECUTIVE DECISION

made by a Cabinet Member



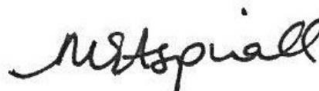
REPORT OF ACTION TAKEN UNDER DELEGATED AUTHORITY BY AN INDIVIDUAL CABINET MEMBER

Executive Decision Reference Number – HASC01 23/24

Decision	
1	Title of decision: Direct Award of new contract to Shared Lives South West
2	Decision maker: Councillor Mary Aspinall (Cabinet Member for Health and Adult Social Care)
3	Report author and contact details: Andrew Rowing-Parker (Care Home Practitioner) andrew.rowing-parker@plymouth.gov.uk
4	<p>Decision to be taken:</p> <ul style="list-style-type: none"> • Approval of the Business Case; • Direct Award of a new contract to the current Shared Lives Provider, Shared Lives South West, for a period of two years from 01 October 2023 ending 31 September 2025; • Agreement to provide additional investment into the new contract, to enable the carers fee to be increased by 11.5% to bring this in line with our neighbouring local authorities and support carer recruitment and retention in this specialised field. <p>The anticipated spend for 2 years is £857,178 including the additional investment into the contract of £25,000 per year</p>
5	<p>Reasons for decision:</p> <p>Shared Lives is part of the suite of care/support options available to Adult Social Care. It offers the opportunity for people to be able to live in the community, with the support from a carer, enabling them to live independent lives but with essential support when they need it.</p> <p>13 people currently live in Shared Lives provision in Plymouth and we would like to invest in the service to enable it to remain resilient but also to be able to grow the number of carers who are available. This will provide greater choice for those who need this type of support in the future.</p>
6	<p>Alternative options considered and rejected:</p> <ol style="list-style-type: none"> 1. Do nothing and revert to spot purchase – there are currently 13 vulnerable adults accessing the existing provision and this approach would weaken our contractual rigour and potentially lead to higher costs; 2. Seek a new provider – market research has been carried out but no equivalent option is available; 3. Joining up our contract with our Peninsula local authority partners – this will continue to be explored over the duration of this contract but the Peninsula group is not yet ready to jointly commission in this way and unable to mobilise in time for the end of our contract. We also need to explore further if this

	model would be beneficial to Plymouth City Council and those using the service.			
7	Financial implications and risks: The annual cost of this contract is built into the Commissioning budget for Adult Social Care and is dependent on the level of service users. The anticipated spend for 2 years is £857,178 including the additional investment into the contract of £25,000 per year; however as the weekly cost of Shared Lives provision is lower than that of some other types of care and support this offers good value for the public purse. If we are able to increase the availability and choice of Shared Lives provision in Plymouth this will have financial benefits in comparison to supported living and residential care.			
8	Is the decision a Key Decision? (please contact Democratic Support for further advice) Please type an X into the relevant boxes	Yes	No	Per the Constitution, a key decision is one which:
			X	in the case of capital projects and contract awards, results in a new commitment to spend and/or save in excess of £3million in total
			X	in the case of revenue projects when the decision involves entering into new commitments and/or making new savings in excess of £1 million
		X	is significant in terms of its effect on communities living or working in an area comprising two or more wards in the area of the local authority.	
	If yes, date of publication of the notice in the Forward Plan of Key Decisions	N/A		
9	Please specify how this decision is linked to the Council's corporate plan/Plymouth Plan and/or the policy framework and/or the revenue/capital budget: The Plymouth Plan 2014-2034 details the Local Authority's ambition to ensure people get the right care from the right people at the right time to improve their health and wellbeing. Plymouth's Go Green Campaign is a key driver for our procurements, with the goal for the City to be net zero carbon by 2030. This includes sustainable procurement and driving innovations to create change across the City. The Corporate Plan priority to keep children, adults and communities safe is a critical driver for the Shared Lives offer.			
10	Please specify any direct environmental implications of the decision (carbon impact) The Shared Lives model supports Plymouth's Go Green ambition by enabling people to live in communities, within travelling distance of their support networks and services.			
Urgent decisions				
11	Is the decision urgent and to be implemented immediately in the interests of the Council or the public?	Yes		(If yes, please contact Democratic Support (democraticsupport@plymouth.gov.uk) for advice)
		No	X	(If no, go to section 13a)

I2a	Reason for urgency: N/A		
I2b	Scrutiny Chair Signature:		Date
	Scrutiny Committee name:		
	Print Name:		
Consultation			
I3a	Are any other Cabinet members' portfolios affected by the decision?	Yes	
		No	X (If no go to section I4)
I3b	Which other Cabinet member's portfolio is affected by the decision?		
I3c	Date Cabinet member consulted	05 September 2023	
I4	Has any Cabinet member declared a conflict of interest in relation to the decision? Please type an X into the relevant box	Yes	If yes, please discuss with the Monitoring Officer
		No	X
I5	Which Corporate Management Team member has been consulted?	Name	Gary Walbridge
		Job title	Interim Strategic Director for People
		Date consulted	31 August 2023
Sign-off			
I6	Sign off codes from the relevant departments consulted:	Democratic Support (mandatory)	DS 44 23/24
		Finance (mandatory)	HLS060923
		Legal (mandatory)	IW/08.09.23/2292
		Human Resources (if applicable)	N/A
		Corporate property (if applicable)	N/A
		Procurement (if applicable)	SS/SC/033/ED/CA/09 23
Appendices			
I7	Ref.	Title of appendix	
	A	Business Case: Direct Award of new contract to Shared Lives South West	

	B	Equalities Impact Assessment						
Confidential/exempt information								
18a	Do you need to include any confidential/exempt information? Please type an X into the relevant box	Yes		If yes, prepare a second, confidential ('Part II') briefing report and indicate why it is not for publication by virtue of Part I of Schedule 12A of the Local Government Act 1972 by ticking the relevant box in 18b below. (Keep as much information as possible in the briefing report that will be in the public domain)				
		No	X					
		Exemption Paragraph Number						
		1	2	3	4	5	6	7
18b	Confidential/exempt briefing report title:							
Background Papers								
19	Please list all unpublished, background papers relevant to the decision in the table below. Background papers are <u>unpublished</u> works, relied on to a material extent in preparing the report, which disclose facts or matters on which the report or an important part of the work is based. If some/all of the information is confidential, you must indicate why it is not for publication by virtue of Part I of Schedule 12A of the Local Government Act 1972 by ticking the relevant box.							
Title of background paper(s)		Exemption Paragraph Number						
		1	2	3	4	5	6	7
Cabinet Member Signature								
20	I agree the decision and confirm that it is not contrary to the Council's policy and budget framework, Corporate Plan or Budget. In taking this decision I have given due regard to the Council's duty to promote equality of opportunity, eliminate unlawful discrimination and promote good relations between people who share protected characteristics under the Equalities Act (2010) and those who do not. For further details please see the EIA attached.							
Signature					Date of decision		20/09/2023	
Print Name		Councillor Mary Aspinall (Cabinet Member for Health and Adult Social Care)						

BUSINESS CASE

Direct Award of new contract to Shared Lives South West



CONTENTS

1. EXECUTIVE SUMMARY	3
2. INTRODUCTION	3
3. CURRENT SERVICE OFFER	6
3.1 CURRENT SERVICE PERFORMANCE AND FEEDBACK Error! Bookmark not defined.	
4. CASE FOR CHANGE	7
5. OPTIONS APPRAISAL	8
6. PROPOSAL (THE RECOMMENDED OPTION)	10
6.1 IMPLEMENTATION TIMELINE	10
6.2 FINANCIAL IMPLICATIONS	11
6.3 RISKS AND MITIGATIONS	11
6.4 OUTCOMES AND BENEFITS	12

I. EXECUTIVE SUMMARY

The aim of this paper is to present the historic and current delivery of the Shared Lives service in Plymouth and make recommendations for the next two years. We are seeking to increase the number of local available Shared Lives hosts and ensure that we pay a realistic and sustainable rate for this provision. If we are successful in the growth of this service and offer, it will provide opportunities to reduce costs to Plymouth City Council as well as offering more choice to our service users.

A Shared Lives Scheme is an alternative to home care and care homes for adults in need of support. A Shared Lives Scheme offers a personalised model of care and support, where carers share their lives and in most cases, their homes with those they support. Shared Lives Carers are self-employed carers/hosts supported by the provider, which is regulated by the Care Quality Commission.

A Shared Lives Scheme offers placements that provide people aged 18 years and older with accommodation and/or care or support which is provided by ordinary individuals or families in the local community. It is equivalent to fostering or supported lodgings for children and young people.

The current provider is Shared Lives South West, who were set up by Devon County Council in 2004, in conjunction with Plymouth City Council and Torbay Council, and are an award-winning charity with a strong national reputation, rated 'Outstanding' by the Care Quality Commission.

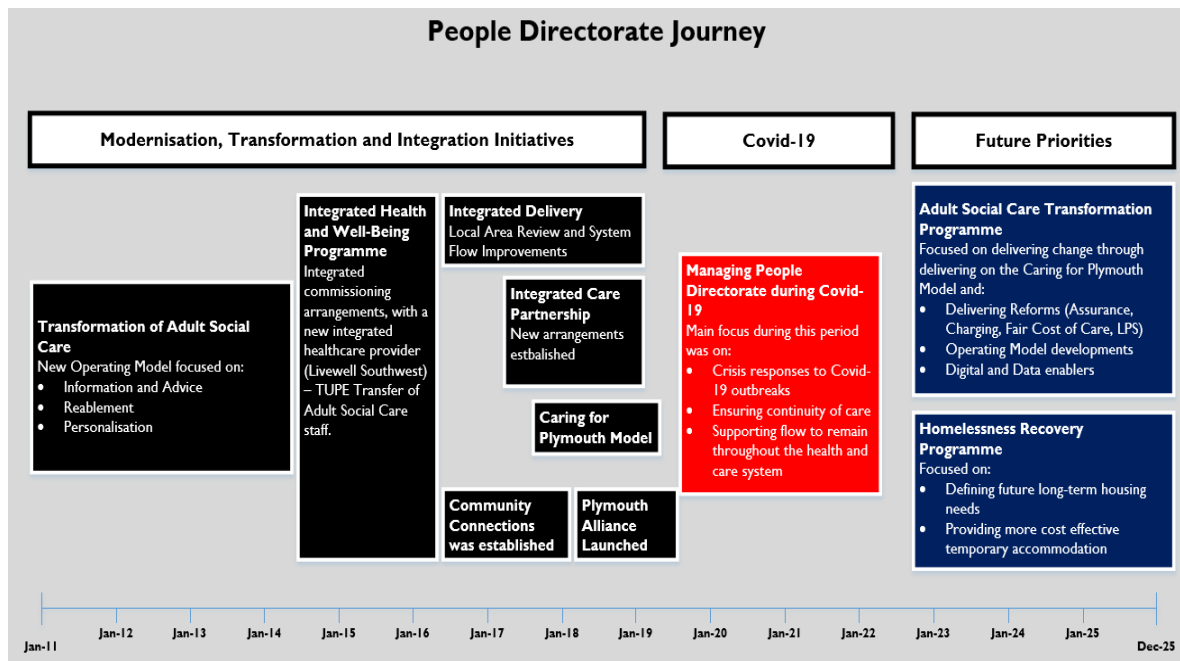
Plymouth City Council contract directly with Shared Lives South West. Other neighbouring authorities Cornwall, Devon, Torbay and Somerset currently commission with Shared Lives South West and it is our intention to continue to investigate if a peninsula wide commissioning approach or joint approach on some project areas will enable opportunity for cost efficiencies or shared resources.

A decision is sought to direct award to Shared Lives South West for a 2 year period to enable service delivery to continue for existing users, and for Plymouth City Council to carry out a focused piece of work with the provider to develop and grow the local offer, working in partnership with Livewell and Shared Lives South West.

2. INTRODUCTION

Plymouth City Council’s People Directorate has been on an aligned and consistent change journey to achieve modernisation, transformation and integration with health partners and communities for more than a decade, with the first phase of Transformation of Adult Social Care being mandated in 2011. The history of this journey is captured in Figure 1.

Figure 1. Adult Social Care Modernisation, Transformation and Integration Journey



In 2016, Community Connections was brought together to create a step change around how the council engages and works with communities and citizens. In 2018, the next major phase of change for Adult Social Care was outlined in the ‘Caring for Plymouth’ report, which sought to ‘enable people to live independent and fulfilled lives as part of their communities’. In April 2019, the Plymouth Alliance was launched, and homelessness, temporary housing, advice and support services were commissioned as part of the complex lives’ procurement including services such as substance misuse, and some mental health provision.

In March 2020, when the Covid-19 pandemic first presented itself, the above journey of change was temporarily put on hold, whilst health and social care partners across the city reacted and responded to the challenges and demands that the pandemic created.

In June 2023, to pick up on previous initiatives and to support the recovery of Plymouth’s health and care sector following the Covid-19 pandemic a new Directorate vision has been established to deliver a caring city where:

“People live in a place they call home with the people and things they love, in communities where they look out for one another, doing things that matter to people”

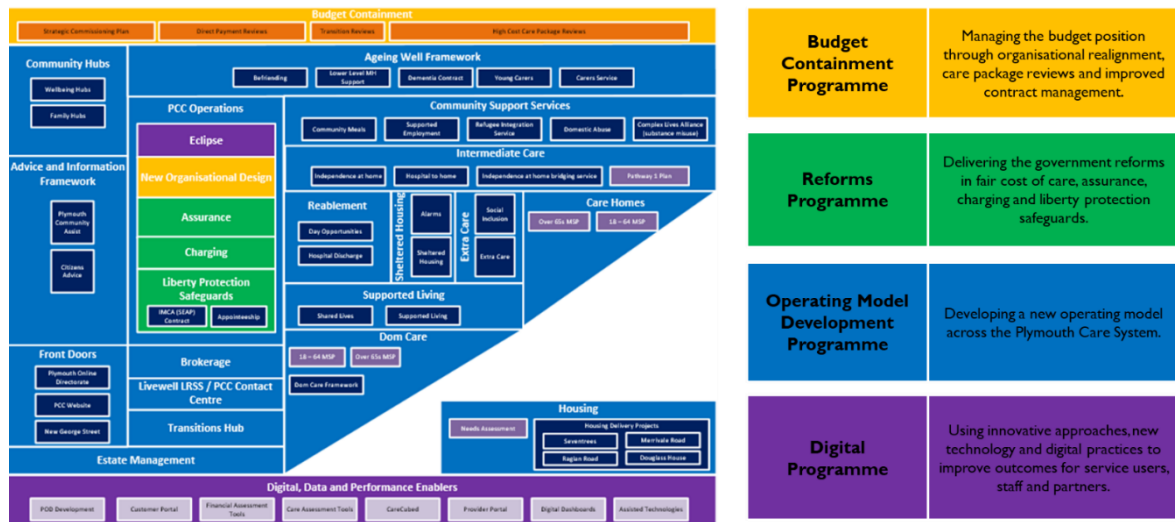
In line with PCC’s Corporate Plan to ‘work with the Police to tackle crime and anti-social behaviour’, to ‘build more homes – for social rent and affordable ownership’, to ‘work with the NHS to provide better access to health, care and dentistry’, and to ‘keep children,

adults and communities safe’ and with the direction from the Department of Health and Social Care, People Directorate has developed a long-term programme that will:

1. Continue to develop its Local Care Partnership (LCP) arrangements, continue to embrace and deliver integration with the ICB, and support the LCP’s overarching aims:
 - Improve health and wellbeing outcomes for the local population
 - To reduce inequalities in health & wellbeing of the local population
 - To improve people’s experience of care
 - To improve the sustainability of the health and wellbeing system
1. Manage the Directorate’s finances to deliver a balanced budget in 2023/24 and for future years;
2. Implement government reforms for Assurance, Charging and Liberty Protection Safeguards;
3. Embrace digital and innovative change that can improve the outcomes for people receiving care, people delivering care and people managing care;
4. Develop and implement new arrangements, processes, structures and culture that develops a more modern, strategic and dynamic operating model and workforce;
5. Deliver changes to the way we build, purchase, manage and use housing across social care, in particular, to improve the position of homelessness in the city.

This long-term programme is called the ‘Adult Social Care Transformation Programme’ and will run from 2023 – 2026. An outline of the model of this programme is presented in Figure 2.

Figure 2. ASC Transformation 2023 – 2026 Model



This business case is to develop a future Shared Lives offer to develop financial savings and provide better outcomes for people using these services.

3. CURRENT SERVICE OFFER

Within Plymouth there are currently 13 long-term Shared Lives clients and no short break placements; there are a range of client groups such as adults with a learning disability, physical disability or mental health need. Plymouth City Council wishes to see the use of Shared Lives Schemes grow and expand. This would happen via increasing the recruitment of host families via Shared Lives South West and also ensuring that the consideration and referral rate from adult social care is maximised.

Currently Plymouth City Council is funding the Shared Lives carers at a lower rate than our neighbouring authorities which could impact on recruitment and retention in the mid to longer term. Plymouth is now the lowest paying local authority in the region, paying between 2.8% and 12.3% less than other local authorities. The contract has not been reviewed for some years which has led to payments falling behind our neighbours and impacted on recruitment and retention of carers in Plymouth.

We are linking with commissioning colleagues across the peninsula to share our learning in relation to this service. There appears to be a joint consensus amongst local authorities that the Shared Lives model has the potential to reduce spend compared to supported living and residential options and also achieve better outcomes for individuals.

Shared Lives placements flex according to the need of the person but average £245 per week. This compares well to the average weekly cost for supported living of £653 and residential care of £1,100.

Our neighbouring authorities have a significantly greater take up of Shared Lives placements:

Devon	73
Torbay	28
Cornwall	130
Somerset	62
Plymouth	13

(Figures from August 2023)

The intention is to seek to grow the number of local carers by 30 over the next 2 years, 15 in year 1 and 15 in year 2. Allowing for the usual rate of carers leaving the service, the target is to have 28 local carers available by the end of the second year of the new contract.

There are challenges to the growth of the service via new carers; this is reflected in similar sectors such as fostering and supported lodgings. Cornwall and Devon are investing in a marketing and media service for Shared Lives South West which includes TV adverts, banners, job fayres, leaflets and radio and will share feedback on the effectiveness of this initiative. The aim is to increase the numbers of people applying to be host families for a Shared Lives offer across the South West.

Additional to this there is a need to consider how referrals are made to Shared Lives and ensure these are considered earlier in assessment and not at the stage when resourcing supported living and residential care is a challenge and needs have escalated.

The Shared Lives scheme will be expected to:

- recruit a range of appropriate short and long term Shared Lives carers;

- offer high quality shared lives placements to service users;
- expand the long term shared lives service to meet the needs of service users and the development priorities of the service purchaser;
- develop and expand the existing short break service to meet the needs of service users;
- offer support for service users referred to the scheme in Plymouth;
- help develop service users independent living skills;
- support service users to be empowered to make informed choices and decisions about their care and treatment and to take greater control over their lives;
- help develop service users to become more independent and move on to a more independent environment if appropriate;

4. CASE FOR CHANGE

The current Shared Lives South West contract expires on 30 September 2023, having been in operation since 2012. Market research has been carried out to consider if Shared Lives South West remains the most appropriate provider for the Council to contract with. On the basis of the overall quality of the service, continuity for service users, the desire to work with the local authority to try to grow the available offer and the value for money relative to other types of care provision, it is considered that Shared Lives remain an appropriate provider.

In the medium term we would like to work with the provider to grow the number of available carers to achieve better outcomes, including considering how the service can be marketed to attract new carers. In addition over the next 2 years we will explore the possibility of achieving this on a peninsula scale by joining-up arrangements with neighbouring authorities.

4.1 National Drivers

The following national strategic drivers support the recommissioning of services such as Shared Lives:

- **NHS Long Term Plan (2019):** Care to be increasingly delivered in people's homes or somewhere convenient, freeing up space in hospitals for those who need it most. Focus on expanding community care, support and prevention.
- **Care Act (2014):** Places a duty on local authorities to facilitate and shape our market for care and support; to ensure sustainability, diversity and continuously improving and innovating services. It includes the promotion of strengths-based approaches and particularly a focus on prevention and wellbeing.
- **Public Services (Social Value) Act (2012):** To consider how the services the local authority commissions and procures might improve the economic, social and environmental wellbeing of the Plymouth area.
- **Equality Act (2010) – Public Sector Equality Duty:** To eliminate unlawful discrimination, harassment, and victimisation, to advance equality of opportunity between people, to foster good relations between people who share a protected characteristic and those who do not.

4.2 Plymouth System Drivers

The following **partners' strategies and plans** must also support the procurement of domiciliary care:

- The **Local Care Partnership** supports the Government's policy Build Back Better: Our plan for health and social care. It aims to: improve health and wellbeing outcomes for the local population, reduce inequalities in health and wellbeing of the local population, improve people's experience of care, and improve the sustainability of the health and wellbeing system. Ultimately, the ambition of the Local Care Partnership is for people to receive 'the right care, at the right time, in the right place'.
- **Livewell Southwest's** mission is to support people to lead independent, health lives in the place, and the community in which they live.

4.3 Plymouth City Council Drivers

The following **council strategies and plans** must also support the commissioning of Shared Lives:

- The **Plymouth Plan 2014-2034** details the Local Authority's ambition to ensure people get the right care from the right people at the right time to improve their health and wellbeing.
- Plymouth's **Go Green Campaign** is a key driver for our procurements, with the goal for the City to be net zero carbon by 2030. This includes sustainable procurement and driving innovations to create change across the City.
- The Corporate Plan priority to keep children, adults and communities safe is a critical driver for the Shared Lives offer.

5. OPTIONS APPRAISAL

5.1 OPTIONS CONSIDERED

The table below presents a summary of the options considered, scoring methodology and recommended option.

OPTION 1	DO NOTHING
Description:	Let the contract expire on 30 September 2023 and revert to spot purchase
Pros:	None Identified
Cons:	We currently have 13 vulnerable adults accessing the existing provision and this approach would weaken our contractual rigour and potentially lead to higher costs.
OPTION 2	SEEK A NEW PROVIDER
Description:	We have carried out market research to consider the availability of other providers with the necessary skills and experience to support Plymouth clients
Pros:	Maintain a Shared Lives option enabling greater choice and opportunity to promote independence. Prevent people accessing supported living and 24/7 Residential Care unnecessarily, if they are able to live more independently
Cons:	We were unable to evidence other providers with the requisite experience to deliver an equivalent service and without disruption to service users
OPTION 3	JOIN-UP A PENINSULA OFFER

Description:	Commission a joint Peninsula Contract with neighbouring local authorities
Pros:	Opportunity to share costs, maximise resources to obtain greater efficiencies in recruitment of host families and referrals, joined up marketing campaigns.
Cons:	The Peninsula group is not yet ready to jointly commission in this way and unable to mobilise in time for the end of our contract. We need time to evaluate if this model would be beneficial.
OPTION 4	EXTEND EXISTING ARRANGEMENTS WITH CURRENT PROVIDER AND INCREASE THE RATE PAID TO CARERS
Description:	Continue provision of Shared Lives service x13 individuals via Shared Lives SW and invest in the service to increase the Carer Rate so it is comparable with our neighbouring local authorities and also offers an increase in paid breaks for carers
Pros:	Maintain a Shared Lives option enabling greater choice and opportunity to promote independence. Prevent people accessing supported living and 24/7 Residential Care unnecessarily. Our neighbouring authorities Devon, Cornwall, Torbay and Somerset have continued to contract with Shared Lives SW for shared lives support. If PCC followed this approach, it would provide consistency across the peninsula.
Cons:	Need to promote growth in host families and referrals. Additional investment used to increase Carers rate and consider how to support a marketing campaign for host families but this would still be more cost efficient than the other options.

5.2 OPTIONS SCORING METHODOLOGY

The following criteria were used to analyse each option:

- **Statutory Duties:** Will this option enable the council to carry out its statutory duties
- **System drivers:** Will this option support the strategies and plans in the system of health and adult social care?
- **Council drivers:** Will this option support the Council's strategies and plans?
- **Revenue cost:** Will this option fit the budget outlined in the MTFP after the changes?
- **User benefit:** Will this option deliver benefits to service users / customers (both internal and external)?
- **Ability to deliver:** How easy will it be to deliver the option?
- **Risk:** How risky is the option in comparison to the current situation?
- **Timescale:** How quickly can the option be introduced and implemented?
- **Future needs:** Does the option allow for future changes to the organisation, and to still perform as expected?

Each criterion was scored 0 – 3. The scoring was defined as:

- 3 – Exceed expectations
- 2 – Sufficient
- 1 – Partly sufficient
- 0 – Not met at all

5.3 OPTIONS APPRAISAL SCORING OUTCOME

	Do Nothing	Seek a New Provider	Join up a Peninsula Offer	Extend Existing Arrangements with current provider
Statutory Duties	0	1	2	2
System Drivers	0	1	2	2
Council Drivers	0	1	2	2
Revenue Cost	3	2	2	2
User Benefit	0	1	2	3
Ability to Deliver	0	1	1	3
Risk	0	1	2	3
Timescale	3	0	1	2
Future Needs	0	1	1	2
Score	6	9	15	21

5.4 RECOMMENDED OPTION

Based on the scoring above it is recommended that **Option 4: Extend existing arrangements with the current provider and increase the rate paid to carers is progressed.**

The following sections in the business case will outline our approach to deliver the recommended option.

6. PROPOSAL (THE RECOMMENDED OPTION)

The proposal is to extend the existing contract with the current provider “Shared Lives South West” for a period of 2 years to commence in succession of the current contract ending on 30 September 2023, to include additional investment in the service to equalise pay rates for carers and offer increased paid breaks. This will ensure current users of the service experience a consistency of service as well as valuing the efforts of current and new carers.

Over the next 2 years we will work with the provider to support the marketing of the service to increase the number of available local carers.

6.1 IMPLEMENTATION TIMELINE

An indicative timescale is as follows:

Activity Milestone	Date
Business Case approved (People Reporting Group)	4 September 2023
Portfolio Holder sign-off	14 September
Decision published	15 September
Contract Award	20 September
Contract Go Live	1 October 2023

6.2 FINANCIAL IMPLICATIONS

The Shared Lives Budget for 23/24 is £403,589. Based upon current spend the total cost of the new two year contract will be £807,178, this remains within the MTFP budget set for Shared Lives delivery.

If we increase the Carer Rate by 11.5% and increase the amount of paid breaks carers received by 1 week the financial impact for 2023/24 will be £12,500 for 6 months (Oct to Mar). The investment in this service will allow for cost avoidance within the Support Living budget. This is reflected in current forecasting and will be factored in to the MTFP for 2024/25.

6.3 RISKS AND MITIGATIONS

Risk	Risk Score			Mitigation	Revised Risk Score		
	Likelihood (1-5)	Impact (1-5)	RAG (1 – 25)		Likelihood (1-5)	Impact (1-5)	RAG (1 – 25)
The levels of demand coming into Shared Lives SW is greater than the budget allocated, meaning that PCC overspends	3	5	15	As part of the new contractual arrangements, contract monitoring against KPIs will take place and agree any new users coming into the service. In addition the Shared Lives budget will be reviewed regularly with finance colleagues as part of monthly monitoring arrangements.	2	3	6
The quality of the service reduces from the current good standard.	2	5	10	As part of contract monitoring we will review the quality and financial stability of the service, drawing on feedback, outcomes for services users and CQC outcomes and inspections. Quality Reviews can be instigated to share best practise and maintain quality standards if required.	1	3	3
Developing the service demand and resources at a manageable level and the service is used appropriately to meet need.	3	4	12	Project plan to be created to maximise and grow the service. This will include linking Shared Lives South West and ASC LIVEWELL to ensure referrals are appropriate. We will promote and develop recruitment of host families and clients via networking and referral pathways Networking with LIVEWELL to review individuals who might benefit from Shared Lives. Creating awareness sessions facilitated by Shared Lives South	2	3	6

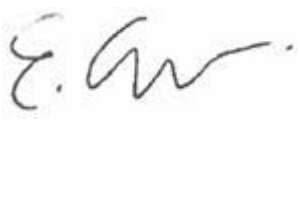
				West to increase knowledge of the service offer. Ensuring that Shared Lives option is considered at the appropriate stage of referral.			
Developing the service in isolation and not drawing on best practice	2	3	6	Commissioner will attend regular (Approx. quarterly) network meetings with other commissioners across the peninsula, covering recruitment of host families, referral pathways, lessons learnt, best practice, opportunities for partnership working.	3	4	12
Carers leaving the service due to affordability, leading to a reduction in the number of placements and people being placed in supported living and residential care which is not required to meet their needs	3	3	9	Additional investment into the contract will enable an increased fee to be paid to carers and also secure an additional paid week as a break from their role. This will bring us in line with Devon and Torbay. This will enable greater opportunity to increase recruitment of host families and maintain the host families that are already established.	2	2	4

6.4 OUTCOMES AND BENEFITS

Strategic Outcome	Benefit Description	Benefit Category
The Local Care Partnership plan to receive 'the right care, at the right time, in the right place'.	The provision will achieve system efficiencies by supporting people to live in a more independent setting. This reduces the need for people to move into supported living and 24/7 residential services which improves their outcomes and in turn achieves financial efficiencies for the local authority.	Service User Improvements
The Local Care Partnership plan to receive 'the right care, at the right time, in the right place'.	Working co-operatively with partners Livewell SW and Shared Lives South West to refer individuals to this provision which will provide a more person centred service, whilst maintaining and building on the individual's independence. Giving the individual an improved customer experience whilst also giving opportunity to be less dependent on services in the future.	System and Partner Improvements
The Corporate Plan priority to keep children, adults and communities safe	Creating opportunities within the community to aid cost of living crisis and become a host family bringing additional income and benefits. Also helping to reduce social isolation and loneliness.	System and Partner Improvements

EQUALITY IMPACT ASSESSMENT – [CONTRACT AWARD, SHARED LIVES]

SECTION ONE: INFORMATION ABOUT THE PROPOSAL

Author(s): This is the person completing the EIA template.	Andy Rowing-Parker	Department and service:	People Strategic Co-operative Commissioning	Date of assessment:	30 August 2023
Lead Officer: Please note that a Head of Service, Service Director, or Strategic Director must approve the EIA.	Emma Crowther, Interim Head of Commissioning	Signature:		Approval date:	30 August 2023
Overview:	<p>Plymouth City Council is proposing to direct award contract to current provider Shared Lives South West for a period of 2 years.</p> <p>A Shared Lives Scheme is an alternative to home care and care homes for adults in need of support. A Shared Lives Scheme offers a personalised model of care and support where carers share their lives and in most cases, their homes with those they support. Shared Lives Carers are self-employed carers supported by the provider, which is regulated by the Care Quality Commission.</p> <p>A Shared Lives Scheme offers placements that provide people aged 18 years and older with an alternative and highly flexible form of accommodation and/or care or support which is provided by ordinary individuals or families in the local community. The scheme is comparable with fostering or supported lodgings as the equivalent for children and young people.</p> <p>The current provider is Shared Lives South West and were set up by Devon County Council in 2004, in conjunction with Plymouth City Council and Torbay Council, and are an award-winning charity with a strong national reputation, rated 'Outstanding' by the Care Quality Commission.</p> <p>Plymouth City Council now contract directly with Shared Lives South West and in putting a new contract in place will ensure that this type of support continues to be available for eligible adults in Plymouth as part of our range of available care options for Adult Social Care.</p>				
Decision required:	This EIA will accompany the business case for the direct award of a new contract to Shared Lives South West – a decision to be made by the Portfolio Holder for Health and Adult Social Care.				

There are no adverse impacts identified and all providers commissioned by Plymouth City Council are required to sign up to our contract terms and conditions and expectations linked to equality and diversity, including routine contract monitoring.

SECTION TWO: EQUALITY IMPACT ASSESSMENT SCREENING TOOL

<p>Potential external impacts: Does the proposal have the potential to negatively impact service users, communities or residents with protected characteristics?</p>	Yes		No	X
<p>Potential internal impacts: Does the proposal have the potential to negatively impact Plymouth City Council employees?</p>	Yes		No	X
<p>Is a full Equality Impact Assessment required? (if you have answered yes to either of the questions above then a full impact assessment is required and you must complete section three)</p>	Yes		No	X
<p>If you do not agree that a full equality impact assessment is required, please set out your justification for why not.</p>	This is a continuation of an existing service.			

SECTION THREE: FULL EQUALITY IMPACT ASSESSMENT

Protected characteristics (Equality Act, 2010)	Evidence and information (e.g. data and consultation feedback)	Adverse impact	Mitigation activities	Timescale and responsible department
Age	<p>Plymouth</p> <ul style="list-style-type: none"> 16.4 per cent of people in Plymouth are children aged under 15. 65.1 per cent are adults aged 15 to 64. 	None anticipated		

	<ul style="list-style-type: none"> • 18.5 percent are adults aged 65 and over. • 2.4 percent of the resident population are 85 and over. <p>South West</p> <ul style="list-style-type: none"> • 15.9 per cent of people are aged 0 to 14, 61.8 per cent are aged 15 to 64. • 22.3 per cent are aged 65 and over. <p>England</p> <ul style="list-style-type: none"> • 17.4 per cent of people are aged 0 to 14. • 64.2 per cent of people are aged 15 to 64. • 18.4 per cent of people are aged 65 and over. <p>(2021 Census)</p>			
<p>Care experienced individuals (Note that as per the Independent Review of Children’s Social Care recommendations, Plymouth City Council is treating care experience as though it is a protected characteristic).</p>	<p>It is estimated that 26 per cent of the homeless population in the UK have care experience. In Plymouth there are currently 7 per cent of care leavers open to the service (6 per cent aged 18-20 and 12 per cent of those aged 21+) who are in unsuitable accommodation.</p> <p>The Care Review reported that 41 per cent of 19-21 year old care leavers are not in education, employment or training (NEET) compared to 12 per cent of all other young people in the same age group.</p> <p>In Plymouth there are currently 50 per cent of care leavers aged 18-21 Not in Education Training or Employment (54 per cent of all</p>	<p>None anticipated</p>		

	<p>those care leavers aged 18-24 who are open to the service).</p> <p>There are currently 195 care leavers aged 18 to 20 (statutory service) and 58 aged 21 to 24 (extended offer). There are more care leavers aged 21 to 24 who could return for support from services if they wished to.</p>			
Disability	<p>9.4 per cent of residents in Plymouth have their activities limited 'a lot' because of a physical or mental health problem.</p> <p>12.2 per cent of residents in Plymouth have their activities limited 'a little' because of a physical or mental health problem (2021 Census)</p>	None anticipated		
Gender reassignment	<p>0.5 per cent of residents in Plymouth have a gender identity that is different from their sex registered at birth. 0.1 per cent of residents identify as a trans man, 0.1 per cent identify as non-binary and, 0.1 per cent identify as a trans women (2021 Census).</p>	None anticipated		
Marriage and civil partnership	<p>40.1 per cent of residents have never married and never registered a civil partnership. 10 per cent are divorced, 6 percent are widowed, with 2.5 per cent are separated but still married.</p> <p>0.49 per cent of residents are, or were, married or in a civil partnerships of the same sex. 0.06 per cent of residents are in a civil partnerships with the opposite sex (2021 Census).</p>	None anticipated		
Pregnancy and maternity	<p>The total fertility rate (TFR) for England was 1.62 children per woman in 2021. The total</p>	None anticipated		

	fertility rate (TFR) for Plymouth in 2021 was 1.5.			
Race	<p>In 2021, 94.9 per cent of Plymouth’s population identified their ethnicity as White, 2.3 per cent as Asian and 1.1 per cent as Black (2021 Census)</p> <p>People with a mixed ethnic background comprised 1.8 per cent of the population. 1 per cent of the population use a different term to describe their ethnicity (2021 Census)</p> <p>92.7 per cent of residents speak English as their main language. 2021 Census data shows that after English, Polish, Romanian, Chinese, Portuguese, and Arabic are the most spoken languages in Plymouth (2021 Census).</p>	None anticipated		
Religion or belief	<p>48.9 per cent of the Plymouth population stated they had no religion. 42.5 per cent of the population identified as Christian (2021 Census).</p> <p>Those who identified as Muslim account for 1.3 per cent of Plymouth’s population while Hindu, Buddhist, Jewish or Sikh combined totalled less than 1 per cent (2021 Census).</p>	None anticipated		
Sex	51 per cent of our population are women and 49 per cent are men (2021 Census).	None anticipated		
Sexual orientation	88.95 per cent of residents aged 16 years and over in Plymouth describe their sexual orientation as straight or heterosexual. 2.06 per cent describe their sexuality as bisexual, 1.97 per cent of people describe their sexual orientation as gay or lesbian. 0.42 per cent of	None anticipated		

	residents describe their sexual orientation using a different term (2021 Census).			
--	---	--	--	--

SECTION FOUR: HUMAN RIGHTS IMPLICATIONS

Human Rights	Implications	Mitigation Actions	Timescale and responsible department
	N/A		

SECTION FIVE: OUR EQUALITY OBJECTIVES

Equality objectives	Implications	Mitigation Actions	Timescale and responsible department
Celebrate diversity and ensure that Plymouth is a welcoming city.	N/A		
Pay equality for women, and staff with disabilities in our workforce.	N/A		
Supporting our workforce through the implementation of Our People Strategy 2020 – 2024	N/A		
Supporting victims of hate crime so they feel confident to report incidents, and working with, and through our partner organisations to achieve positive outcomes.	N/A		
Plymouth is a city where people from different backgrounds get along well.	N/A		