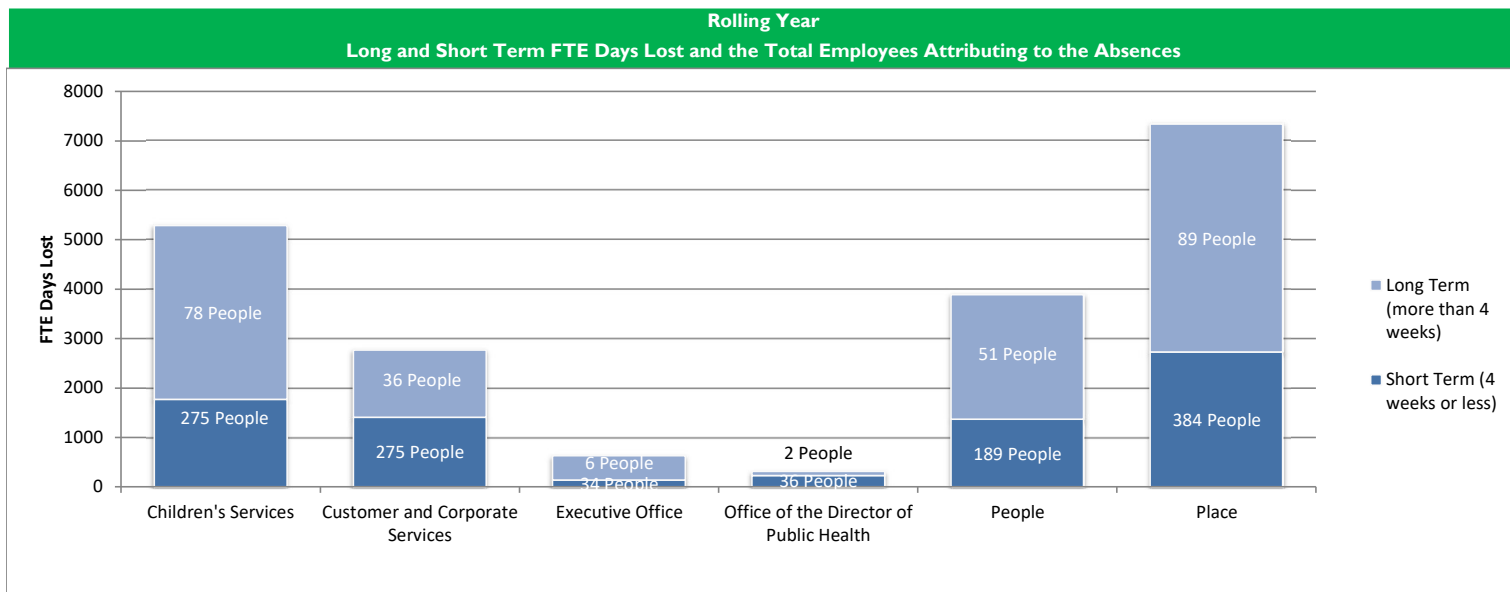


Council Wide Sickness Dashboard (Excludes Schools)

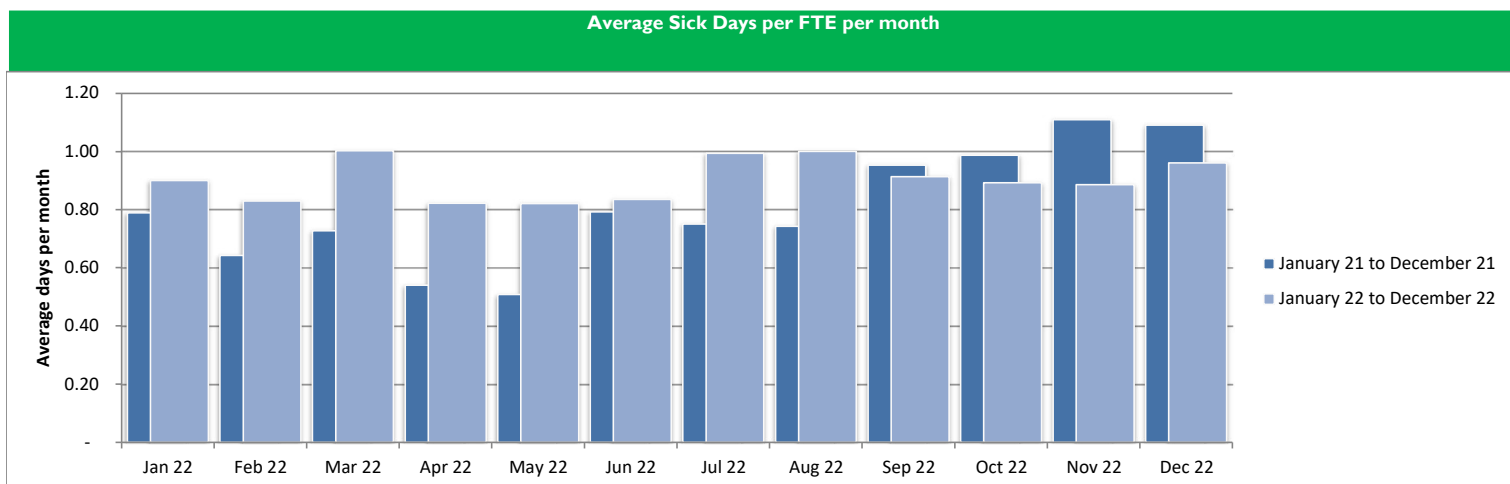
December 2022

Directorate	Total Number of Days Lost (Rolling Year)				Comparison of Average Days Lost to Directorate Target (Rolling Year)			
	Number of FTE Employees	Total Work Days Available (FTE) (Based on calculation, not an exact figure)	Total FTE Days Lost to Sickness	Percentage of Days Lost	Average Days Lost Per FTE (Rolling Year)	Average Days Lost per FTE (Month)	Directorate Target (22/23)	Comparison of Average to Directorate Target (Rolling Year)
Children's Services	528.12	118,826.40	5,284.53	4.45%	10.01	0.88	7.00	3.01 ●
Customer and Corporate Services	505.25	113,681.52	2,767.86	2.43%	5.48	0.60	7.00	-1.52 ●
Executive Office	70.65	15,895.35	625.68	3.94%	8.86	0.71	7.00	1.86 ●
Office of the Director of Public Health	80.38	18,084.68	310.50	1.72%	3.86	0.29	7.00	-3.14 ●
People	260.26	58,557.44	3,891.31	6.65%	14.95	1.61	7.00	7.95 ●
Place	735.54	165,497.32	7,337.65	4.43%	9.98	1.13	7.00	2.98 ●
Council Wide	2,180.19	490,542.71	20,217.53	4.12%	9.27	0.96	7.00	2.27 ●

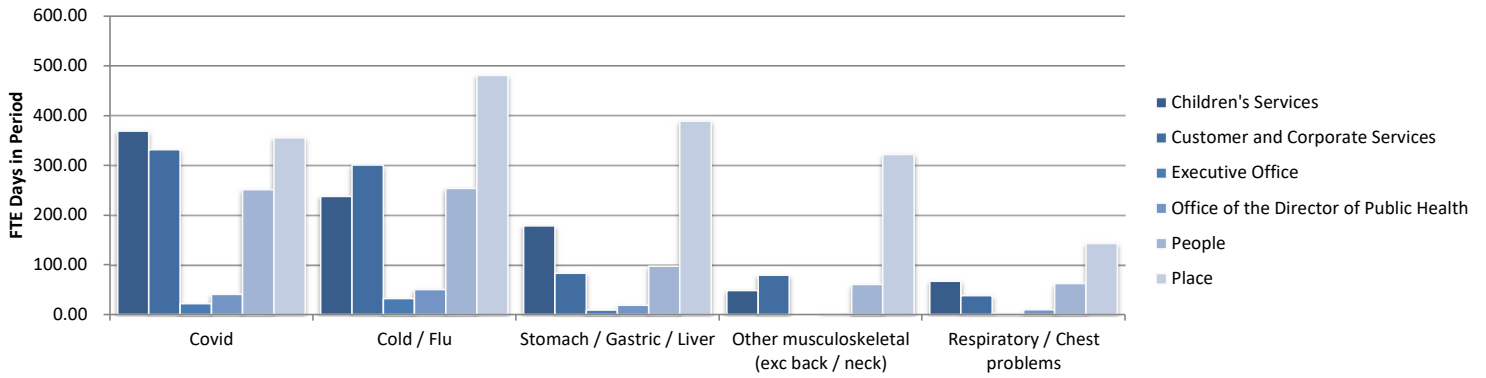


Average Number of Sick Days per FTE for the rolling year ended:

Directorate	Jan 22	Feb 22	Mar 22	Apr 22	May 22	Jun 22	Jul 22	Aug 22	Sep 22	Oct 22	Nov 22	Dec 22
Children's Services	9.42	10.41	11.73	11.35	11.43	11.25	11.56	10.71	10.33	9.93	9.97	10.01
Customer and Corporate Services	7.09	5.72	5.54	5.84	5.28	5.38	5.52	5.84	5.81	5.03	5.31	5.48
Executive Office	6.22	6.75	7.10	6.28	6.58	6.52	7.22	7.58	8.21	8.72	8.74	8.86
Office of the Director of Public Health	3.81	4.13	3.55	3.58	4.06	4.28	4.26	4.07	3.79	9.36	3.87	3.86
People	9.41	10.41	10.74	10.73	11.70	12.32	13.69	14.50	14.65	14.50	14.09	14.95
Place	9.14	9.16	9.06	9.24	9.17	9.15	9.41	9.39	9.04	9.28	9.39	9.98
Council Wide	8.53	8.49	8.74	8.76	8.77	8.84	9.23	9.19	9.01	9.03	8.90	9.27



Rolling Year
Top 5 Known Reasons for Short Term Absences



Rolling Year
Top 5 Known Reasons for Long Term Absences

