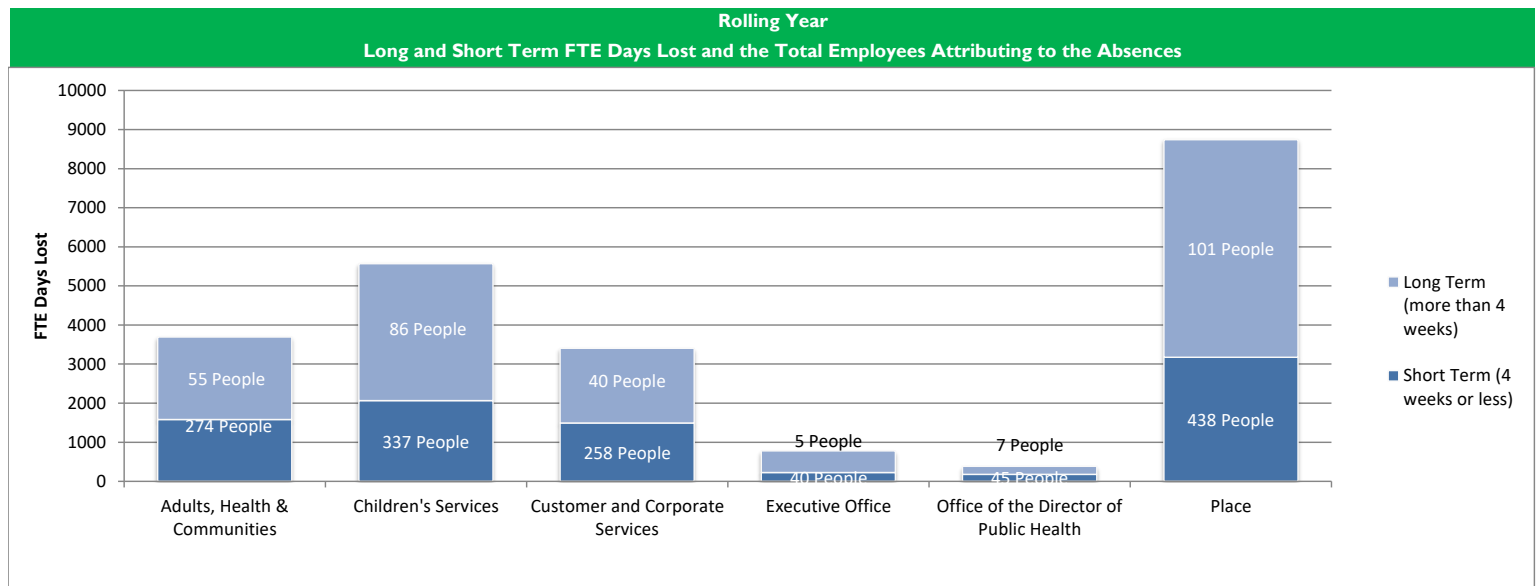


Council Wide Sickness Dashboard (Excludes Schools)

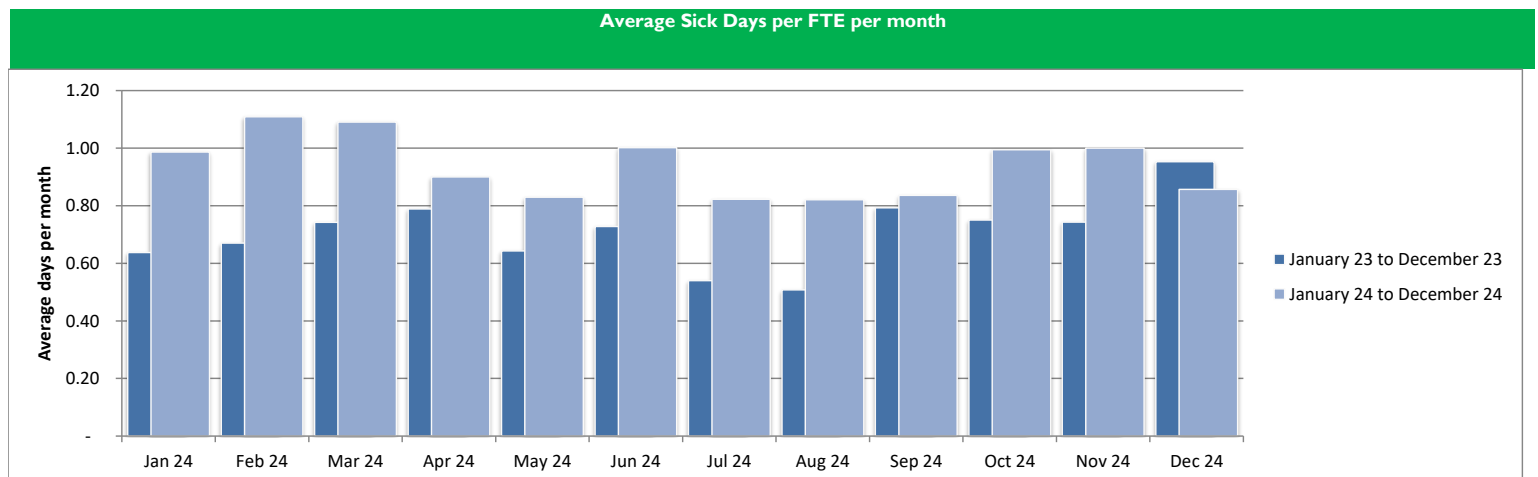
December 2024

Directorate	Total Number of Days Lost (Rolling Year)				Comparison of Average Days Lost to Directorate Target (Rolling Year)				
	Number of FTE Employees	Total Work Days Available (FTE) (Based on calculation, not an exact figure)	Total FTE Days Lost to Sickness	Percentage of Days Lost	Average Days Lost Per FTE (Rolling Year)	Average Days Lost per FTE (Month)	Directorate Target (24/25)	Comparison of Average to Directorate Target (Rolling Year)	
Adults, Health & Communities	275.02	62,980.57	3,694.44	5.87%	13.43	1.31	7.00	6.43 ●	
Children's Services	588.95	134,869.91	5,568.40	4.13%	9.45	1.00	7.00	2.45 ●	
Customer and Corporate Services	483.98	110,832.46	3,402.52	3.07%	7.03	0.46	7.00	0.03 ●	
Executive Office	86.37	19,778.17	782.24	3.96%	9.06	0.79	7.00	2.06 ●	
Office of the Director of Public Health	99.57	22,801.27	385.15	1.69%	3.87	0.73	7.00	-3.13 ●	
Place	791.30	181,208.01	8,739.65	4.82%	11.04	0.97	7.00	4.04 ●	
Council Wide	2,325.20	532,470.39	22,572.40	4.24%	9.71	0.89	7.00	2.71 ●	

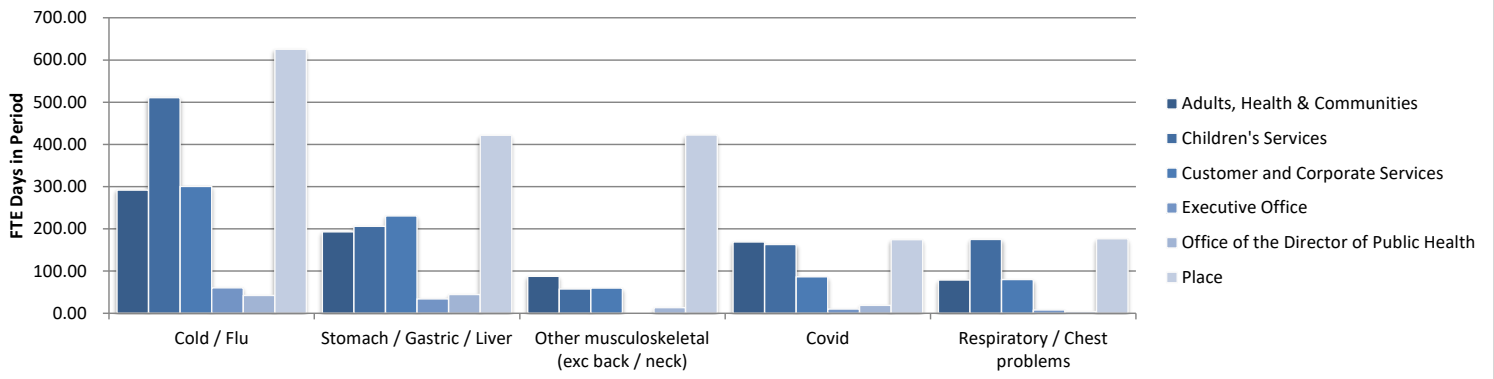


Average Number of Sick Days per FTE for the rolling year ended:

Directorate	Jan 24	Feb 24	Mar 24	Apr 24	May 24	Jun 24	Jul 24	Aug 24	Sep 24	Oct 24	Nov 24	Dec 24
Adults, Health & Communities	14.85	13.85	13.20	13.23	12.84	13.14	13.90	13.62	13.72	13.66	13.65	13.43
Children's Services	12.07	12.52	12.86	12.52	12.43	11.34	11.23	10.62	9.86	9.68	9.31	9.45
Customer and Corporate Services	8.35	8.06	8.17	8.46	8.63	8.61	8.50	8.06	7.86	7.87	7.15	7.03
Executive Office	3.11	3.54	3.68	4.63	5.16	5.63	6.13	6.70	8.31	8.06	8.69	9.06
Office of the Director of Public Health	6.99	7.20	7.39	5.30	5.03	5.36	4.89	4.08	3.53	3.12	3.70	3.87
Place	9.57	10.31	10.87	11.09	10.94	11.07	11.15	11.29	10.84	10.84	10.94	11.04
Council Wide	10.18	10.40	10.63	10.64	10.56	10.40	10.46	10.23	9.89	9.83	9.67	9.71



Rolling Year
Top 5 Known Reasons for Short Term Absences



Rolling Year
Top 5 Known Reasons for Long Term Absences

