

# PUPIL PLACE PLANNING

April 2024



## Introduction

This report summarises the information produced in the latest pupil forecast model based on the January 2024 school census data and uses this information to suggest numbers of school places required. It begins with the current NOR and the surplus places available by city and planning locality.

## I - Current Numbers on Roll and Surplus/Deficit– Academic Year 2023/24

23/24 Academic Year	Primary			%	Secondary			%
	PAN	NOR	Surplus	Surplus	PAN	NOR	Surplus	Surplus
R	3317	2715	602	18%				
1	3034	2680	354	12%				
2	3061	2744	317	10%				
3	3207	2898	309	10%				
4	3067	2931	136	4%				
5	3185	2940	245	8%				
6	3181	2970	211	7%				
7					3226	3268	-42	-1%
8					3177	3186	-9	0%
9					3109	3100	9	0%
10					3035	2973	62	2%
11					2959	2868	91	3%
12								
13								
Primary	22052	19878	2174	10%				
Secondary	15506	15395	111	1%				
Overall PAN (R-11)		37558						
Overall NOR (R-11)		35273						
Overall Surplus (R-11)		2285						
Overall % Surplus (R-11)		6%						

## PRIMARY

Primary numbers on roll are monitored and forecasted numbers are based on separating the city in eight pupil planning areas (PPA). This is required by the DfE when providing forecasting information to ensure a measured approach to allocating Basic Need Funding; the funding provided to the Local Authority to meet its statutory duty of ensuring that there are adequate school places in Plymouth.

The following tables show:

1. The surplus in each PPA based on the determined PAN's when each year group joined school and the number on roll in the January 2024 census.
2. The surplus in each PPA based on the current admitted number in each year group and the number on roll as of 05/04/2024

1 - PAN at admission and NOR as of January 2024 census

Surplus	Reception	Year 1	Year 2	Year 3	Year 4	Year 5	Year 6	Average
CENTRAL	36%	24%	37%	41%	34%	30%	16%	31%
NORTH	11%	12%	5%	10%	9%	9%	14%	10%
NORTH WEST	19%	18%	21%	16%	15%	11%	8%	16%
PLYMPTON	27%	25%	21%	21%	14%	15%	6%	18%
PLYMSTOCK	20%	27%	25%	12%	12%	6%	9%	16%
SOUTH	18%	15%	19%	5%	6%	13%	7%	12%
SOUTH WEST	25%	28%	23%	25%	24%	24%	29%	25%
WEST	11%	20%	13%	13%	9%	5%	10%	12%
<b>AVERAGE</b>	<b>21%</b>	<b>21%</b>	<b>21%</b>	<b>18%</b>	<b>15%</b>	<b>14%</b>	<b>12%</b>	

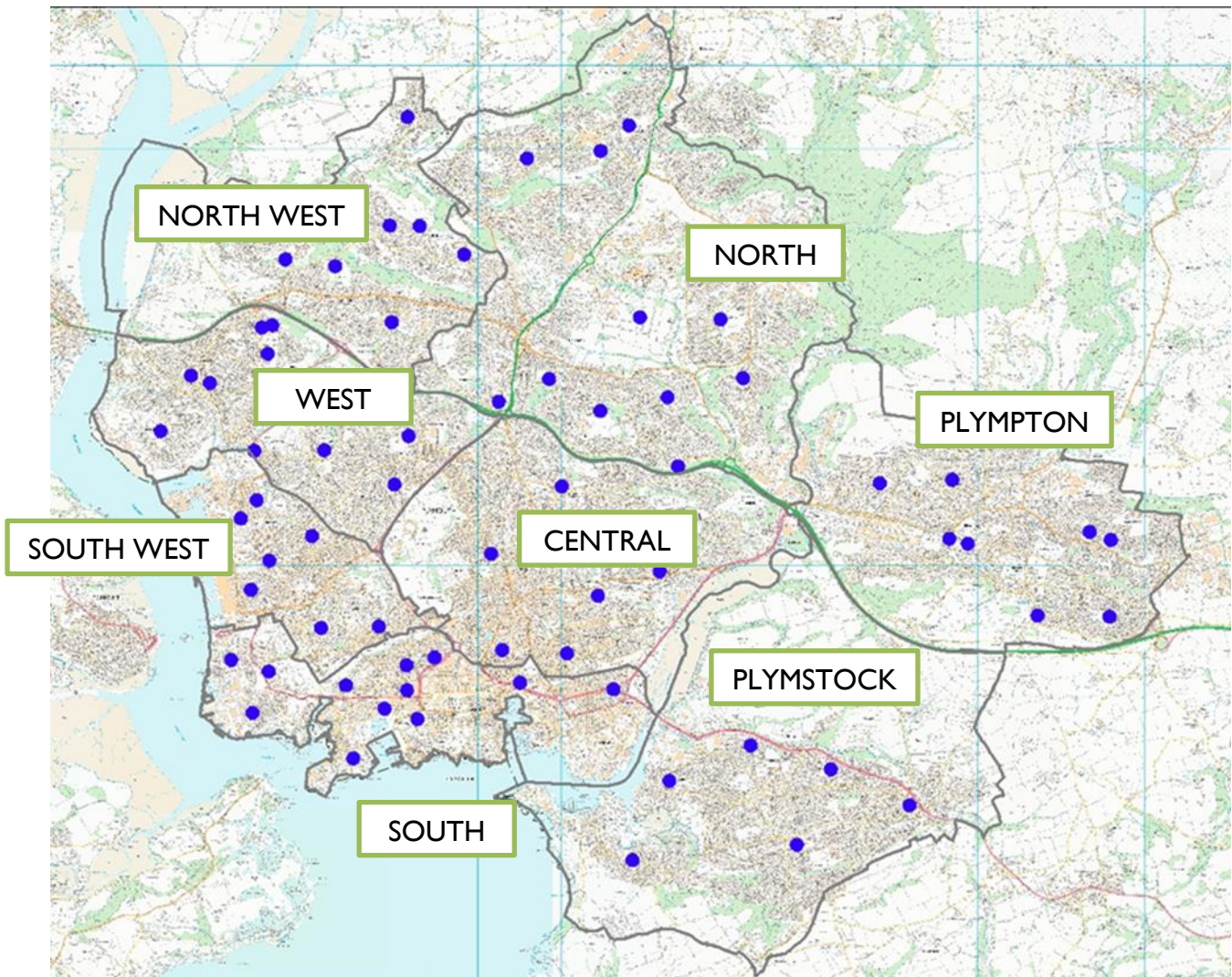
2 - Current numbers admitted to and NOR as of 05/04/2024

Surplus	Reception	Year 1	Year 2	Year 3	Year 4	Year 5	Year 6	Average
CENTRAL	5%	7%	1%	4%	2%	2%	6%	4%
NORTH	18%	8%	12%	6%	3%	9%	6%	9%
NORTH WEST	25%	15%	12%	12%	5%	12%	5%	12%
PLYMPTON	19%	17%	16%	8%	4%	6%	4%	11%
PLYMSTOCK	17%	15%	18%	4%	6%	13%	7%	12%
SOUTH	23%	6%	5%	6%	1%	2%	4%	7%
SOUTH WEST	9%	19%	7%	5%	0%	1%	7%	7%
WEST	22%	12%	11%	9%	11%	12%	13%	13%
<b>AVERAGE</b>	<b>17%</b>	<b>12%</b>	<b>10%</b>	<b>7%</b>	<b>4%</b>	<b>7%</b>	<b>6%</b>	

\*\*Change since admission

CITY

	4%	9%	10%	11%	11%	7%	6%	
	18%	12%	10%	7%	4%	8%	7%	9%



## SECONDARY

Secondary numbers on roll are monitored and forecasted numbers are based on looking at the city as a whole. Splitting the city in line with the primary PPA's means that some areas end up without a secondary school within its boundaries. In addition to this, past analysis shows that parents are more likely to accommodate a further distance of travel in order to get a place in the secondary school they want, therefore it makes sense to plan for secondary places as an entire area.

City	Year 7	Year 8	Year 9	Year 10	Year 11
Current NOR	3268	3186	3100	2973	2868
Current Admission Number	3226	3177	3109	3035	2959
Current Surplus	-1.3%	-0.3%	0.3%	2.0%	3.1%
NOR as of Jan	3239	3048	2973	2774	2557
PAN at admission	3218	3296	3271	3281	3201
Expected Surplus	-1.6%	3.3%	5.2%	9.4%	10.4%

School	Year 7	Year 8	Year 9	Year 10	Year 11	Average
All Saints CE Academy Plymouth	-5%	1%	1%	1%	0%	-1%
Coombe Dean School	0%	-1%	2%	-1%	13%	3%
Devonport High School for Boys	0%	0%	0%	0%	1%	0%
Devonport High School for Girls	0%	0%	1%	-2%	-2%	-1%
Eggbuckland Community College	-3%	0%	0%	3%	8%	2%
Hele's School	0%	0%	0%	0%	3%	1%
Lipson Co-Operative Academy	-13%	-14%	-1%	1%	1%	-5%
Marine Academy Plymouth	0%	10%	2%	19%	5%	7%
Notre Dame RC School	0%	1%	0%	4%	2%	1%
Plymouth High School for Girls	-1%	1%	0%	11%	3%	3%
Plymstock School	0%	0%	2%	0%	5%	2%
Plympton Academy	0%	0%	2%	1%	4%	1%
Sir John Hunt Community Sports College	1%	0%	3%	7%	10%	4%
St Boniface RC College	-1%	0%	0%	3%	14%	3%
Stoke Damerel Community College	-1%	0%	1%	1%	-1%	0%
Tor Bridge High School	-2%	-2%	-9%	-5%	-5%	-5%
Millbay Academy	1%	-4%	-2%	0%	-4%	-2%
UTC Plymouth	0%	0%	2%	-10%	-12%	-3%
Scott Medical and Healthcare School			0%	5%	4%	3%
<b>CITY</b>	<b>-1%</b>	<b>0%</b>	<b>0%</b>	<b>2%</b>	<b>3%</b>	<b>1%</b>

## 2 - Pupil numbers 2010-2024 & overall forecasts

### PRIMARY

Pupil numbers in Plymouth primary schools between 2009/10 and 2017/18 grew steadily, driven by an increase in live births since 2002. The total number of Primary school children in Plymouth rose from 17,720 in January 2010 to 20,882 in January 2018, an increase of 16%.

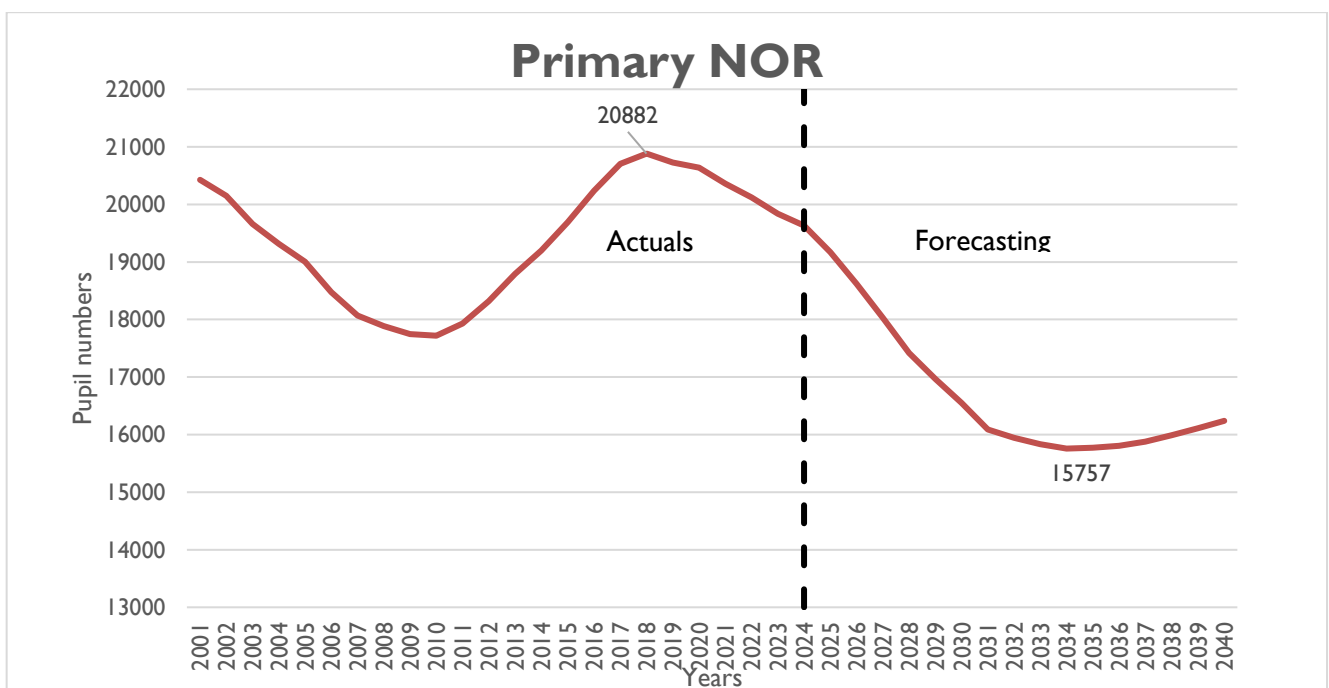
As a result, Basic Need funding was provided to the LA and a number of projects were undertaken to increase the number of primary school places available, which included the creation of new schools, whole school rebuilds, expansion of schools and work to accommodate bulge classes. Details of these projects will be provided within the analysis of each primary locality

From 2011/12 the birth rate began to decline, however it remained above 3000 births per year until 2015/16. Since then the number of births have been below 3000, with last academic year's (2022/23) birth total being the lowest recorded just over 2400 (2417)

In line with what we know about live birth data it is expected that pupil numbers joining school in reception, will continue with the decline that began in 2018/19. From the peak of pupils across the entire primary cohort (20882) in 2017/18 the decline will continue up to the forecast point of the live birth data we have (those born in 2022/23 looking to join school in 2027/28) and will be around 17,400. Current birth data we have for the academic year 2023/24, at the moment, is not indicating that there will be an uptick in pupil numbers for those looking to joining in 2028/29.

There will be declines in pupil numbers across the city; in 2027/28 we will see a reduction of 13% on the cohort in 2023/24. There will be reductions in all our primary planning localities, however the south west and west localities at present appear to be the localities which will see the biggest reduction in numbers

In September 2023, Y6 was the last of the 'above 3000 pupils' cohorts in primary; from this point up to when the current reception year group leaves primary, year group cohorts are forecast to be between 2200 and 2800.





## SECONDARY

Until 2017/18, secondary pupil numbers in Plymouth were falling, following the trend seen in primary schools prior to the increase in the birth rate detailed above. From September 2018, the number of pupils in secondary schools has begun climbing. This follows on from a prolonged decline in numbers over a 15 year period. This was primarily dealt with by secondary schools agreeing to reduce the numbers they admit, with the intention to increase their numbers again once numbers rose.

It is expected that in line with the primary growth seen prior to 17/18, and a current trend of increasing numbers coming from other LA's in year 7, Secondary school numbers will continue to grow until 2026/27. This will see the seven largest cohorts to start school since September 2010, in year's 7 to 13, and will total just over 18,200 pupils, a 12.6% increase on 2017/18. Currently there are around 17,500 pupils in our secondary schools.

As numbers began to increase in secondary schools and when looking at future forecasting, there are some legacy issues that need to be recognised.

- During the period of time that secondary school numbers were in decline and up to the academic year 2023/24, all but one of our secondary schools converted to academy status; with the remaining maintained school continuing to pursue conversion. Following conversion, most academies have further reduced the number of pupils they will actually admit (which they are entitled to do), as a reaction to falling numbers on roll. Most schools who reduced numbers, have been reticent about returning to offering numbers that were once accommodated; citing changes in building use, staff restructures and reorganised curriculums, as reasons for not returning to previously admitted numbers. As the LA, the figure reported to the DfE has to be the capacity numbers that are detailed in an academy's funding agreement. Therefore the LA know that there is physical capacity available which it cannot access and has no power to instruct an academy to take additional numbers. A knock on from this also is that where schools have closed particular sections or parts of their building as a result of falling numbers, these have fallen into a state of disrepair and often will site this as a reason for not expanding their numbers or will request funding as a condition of doing so.
- The two original schools which were sponsored to become academies in 2010/11 as a result of falling standards, had extensive rebuilds or remodelling as part of their support packages. Both these schools used to take higher numbers of children, but now do not have the physical space to return to their previous admission figures.
- During the period of decline, three KS4 establishments and an all-through free school opened. This increased competition amongst schools for a declining number of pupils. There was increased amount of surplus in Years 9, 10, 11 and more options for parents to consider, which impacted the schools chosen for Y7. It is felt that previous collaborative approaches and relationships between secondary schools which used to exist, were eroded as a result.
- The growth in numbers when pupils were in Primary school was recognised by the DfE and the LA received significant BN funding to provide places for these pupils. Up to the present, this funding has not been replicated to provide for secondary places. This is due to the perception that we have a large secondary school estate based on capacity figures in Academy funding agreements, when in reality our schools are unwilling to provide this number of places. This problem has been exacerbated by the creation of KS4 establishments for years 9/10 upwards and the low numbers recently seen in sixth form provision. For many years, sixth form space was not taken into account when looking a

capacity figures, but since this introduction, Plymouth appears to have more space for its lower years groups; which is actually specifically allocated space for Sixth form students i.e. purpose built blocks or centres.

The growth in secondary numbers since September 2018 has been dealt with by negotiating additional places with our secondary schools. As there has not been funding to offer as an incentive, the LA has only been able to increase secondary places to cover the minimum places required and most have not been permanent increases. There have been a number of temporary increases since September 2017, both on negotiation with the LA and through a school's own volition, for particular academic year groups. However, once the year group has moved past the point of entry year group, many have then capped the number they will admit to, to the number that is on roll at that point. This therefore removed any surplus capacity potential.

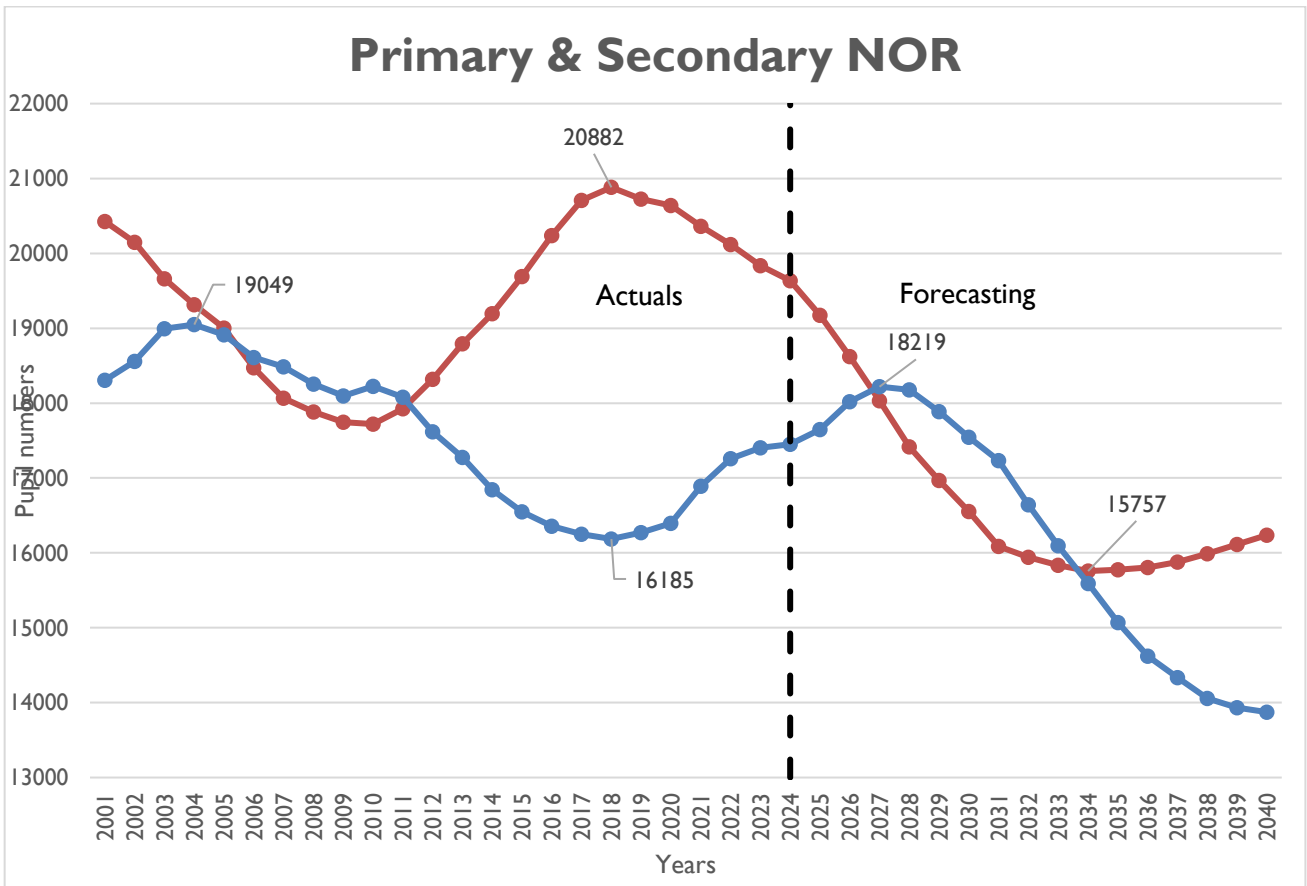
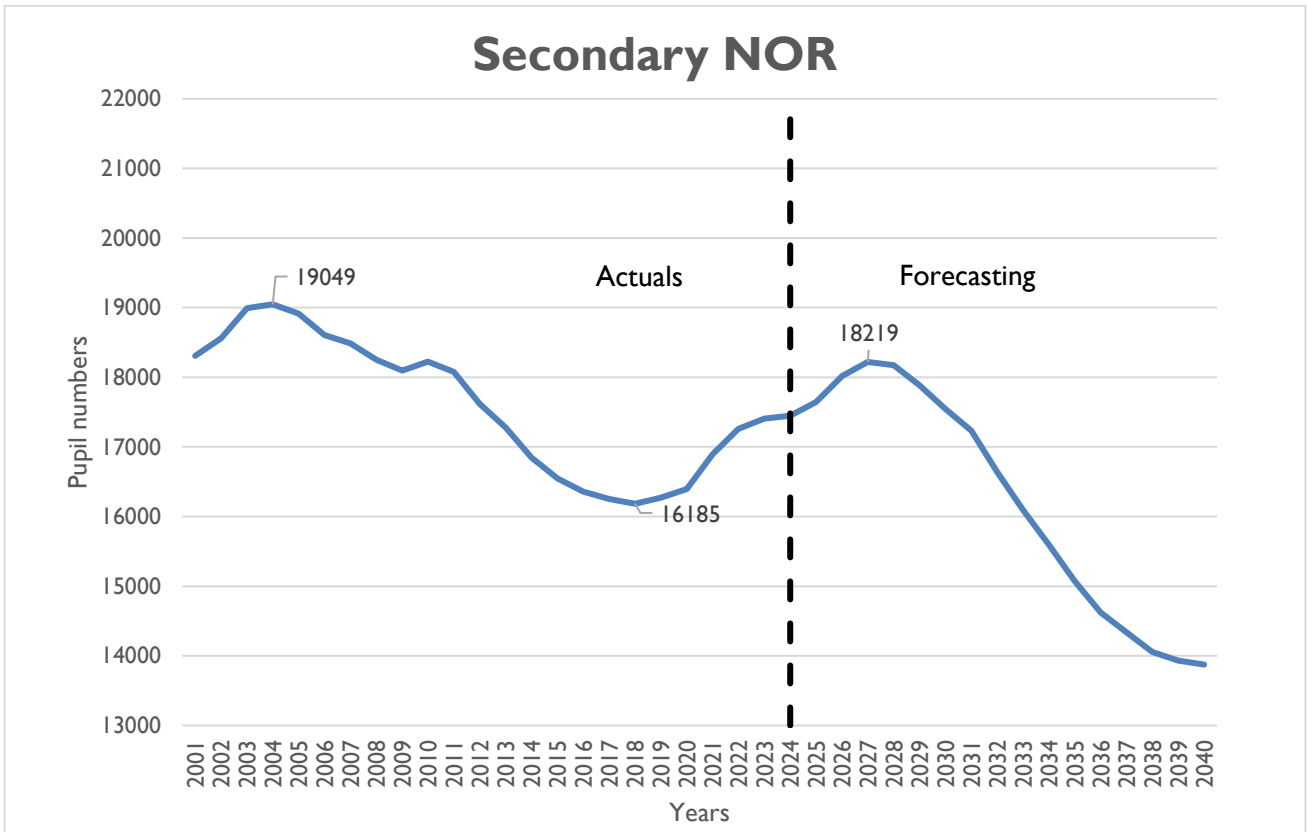
Capping or restricting the numbers that will be admitted, is a practice that has been implemented by the majority of secondary schools since numbers began to increase. Places are limited with surplus percentages all below the desirable 8 % in all year groups. All current year groups have below 4% surplus. Year's 7 and 8 continue to be the worst affected year groups, where it appears that there is negative surplus due to school's capping at a number they intend to "work back to", for example they have 250 on roll, but will cap at 240 and not admit any one until the number drops below 240. This will be the same for the next 2-3 years for these specific year groups (as the problem is eased once cohorts hit Y9)

Some secondary schools have recognised the growing numbers coming and have chosen to determine higher PAN's for 24/25 (the current point up to which a PAN can be determined). Others have chosen to take over PAN in various years since 2018/19, once they have an indication of the number likely to be allocated for the coming Y7 in September. These are choices they are making through their own decision making processes and often not on consultation with the LA. Once a cohort is past normal point of entry, they continue to cap numbers they are willing to admit, often now citing "challenging cohorts" as the reason to limit the number they will take.

As an LA it is understood that there are pressures facing our schools with regard to finance and budget, the instability created from the in-year movement of pupils and the recruitment and retention of staff, however as an LA we are continuously impeded in carrying out our statutory duty of being able to provide the required school places.

As the birth rate has been in decline and primary numbers have been declining since 2017/18, what had previously been envisaged as a continuous growth of secondary places, now appears to be a bulge. However, there will still be a pressure to provide enough places until 2026/27 which will require negotiation. Following this, the decline of secondary numbers will need to be addressed once again.



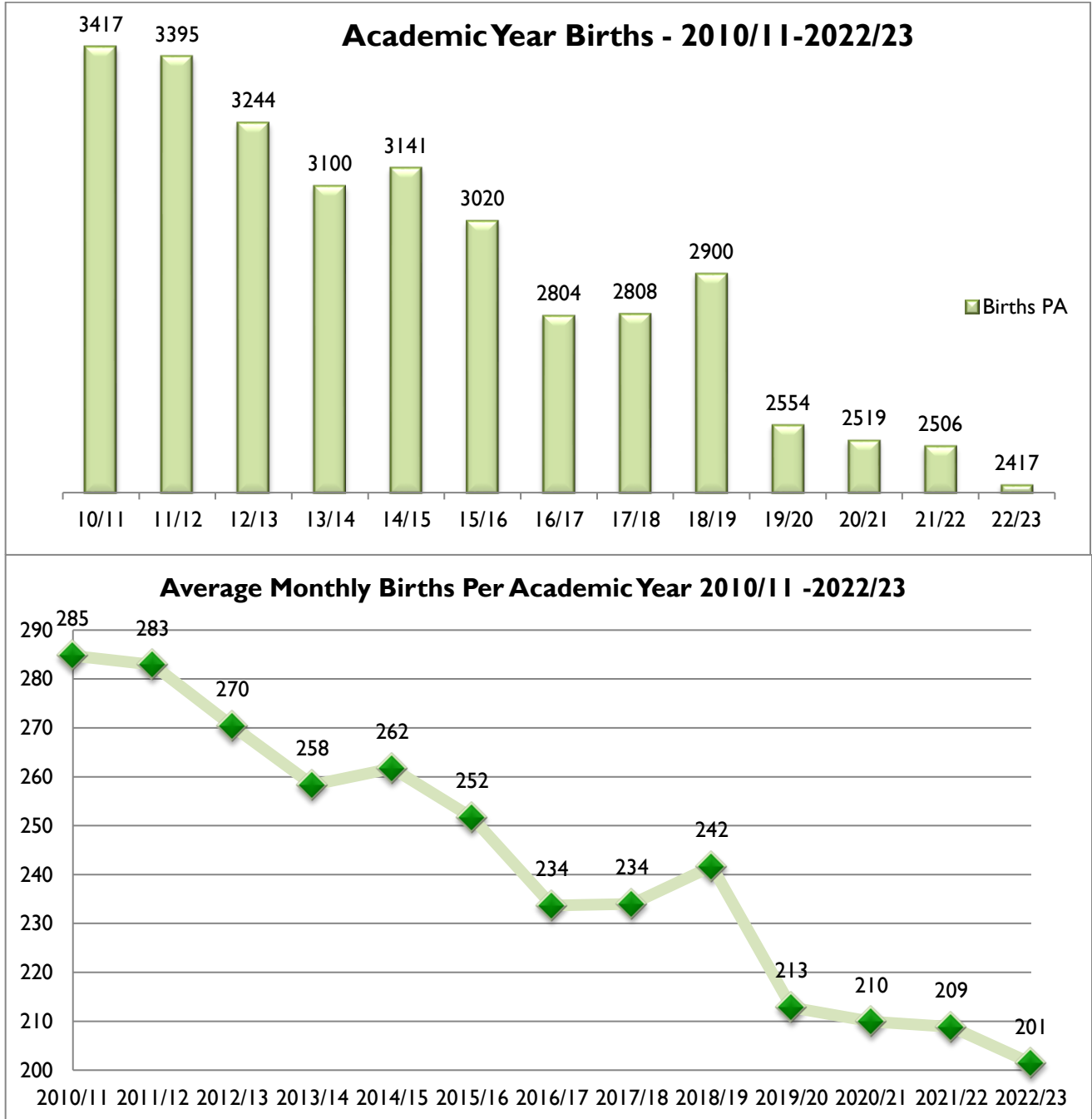


### 3 - Primary and Secondary Forecasts

#### BIRTH DATA

The number of live births in Plymouth for calendar year 2022 were 2415. Over the last ten years, the number of births have fallen from a peak in 2012 of 3459.

When collated in academic years, the birth figures are as below:



Looking forward, the predicted number of births is calculated using the ONS statistical releases for the 2011 national census by quinary age group for females between the aged of 20-34 in Plymouth as a base point. This is then combined with the ONS mid-year estimates following 2011 (which is released up to 2023). These figures are then compared to the historic live birth data in Plymouth to produce an average % of births to mothers. This is then applied to the 2018 based subnational population projections (latest released) to produce the expected number of live births per calendar year.

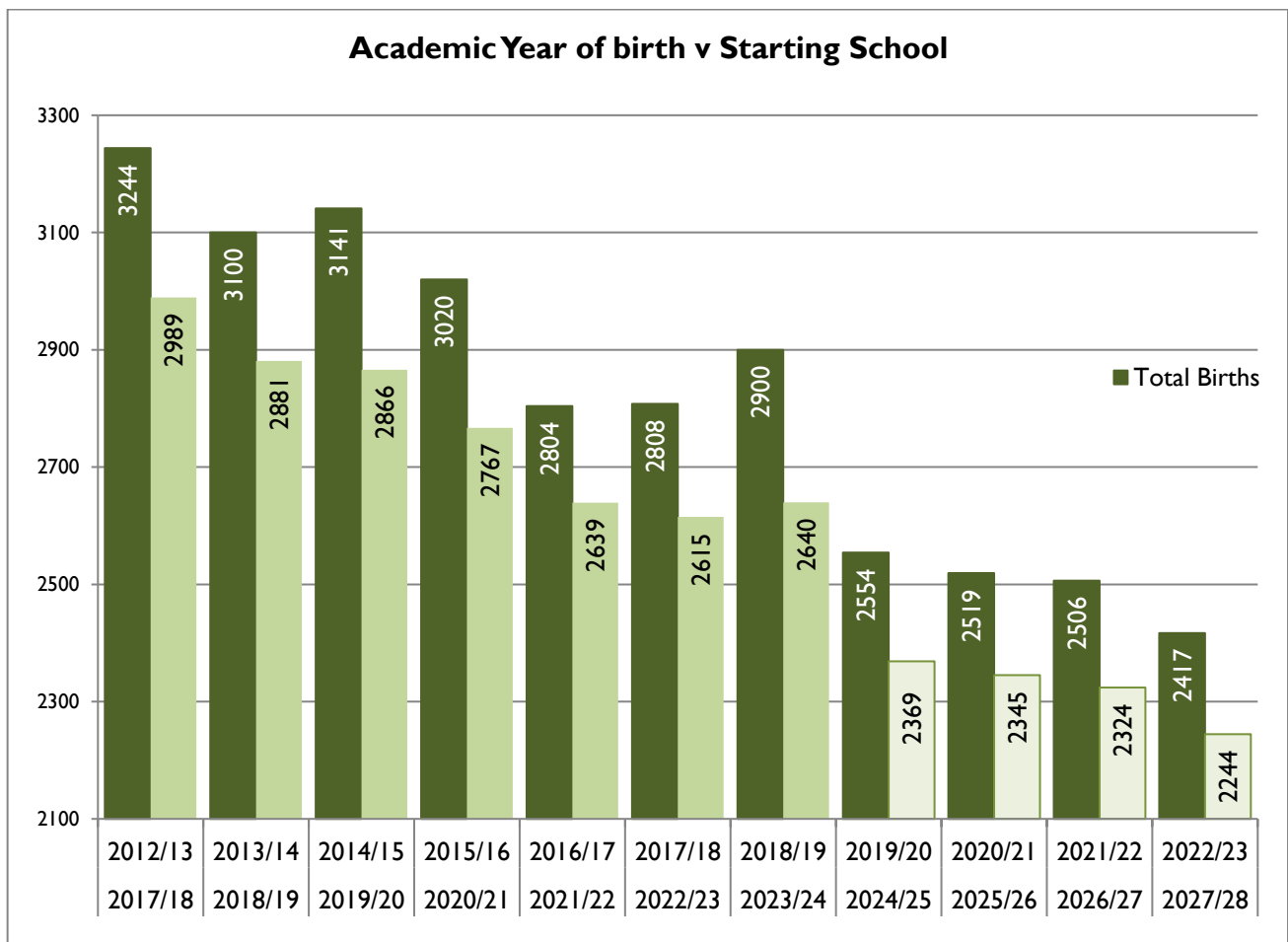
Subnational population projections from the ONS are still based on 2018 data. Despite having 2021 census data available, subnational projections have not been updated since 2018. This was due to the impacting factors of the COVID pandemic and the UK’s exit from the European Union. Updated subnational population projections are expected by 2025. Mid year estimates for 2022 have been calculated by the ONS and have been incorporated in our forecasting.

The population of females ages 20-34 in Plymouth

- In the 2018 projections it was estimated there were to be 27714 women in 2021.
- The 2021 census provided information that there were 29131 women
- The mid year estimate for 2022 put the number of women at 28911.

As there is a variation between the most recent numbers provided, an average has been taken to apply to the forecasts for 2023. From 2024 onwards, the projected numbers from the 2018 calculations are returned to (in light of the lack of any updated numbers). It will be interesting to see how the ONS will interpret this and what impact this will have on our population projections following the incorporation of 2021 census data. The LA will need to be ready to react to a likely change in numbers.

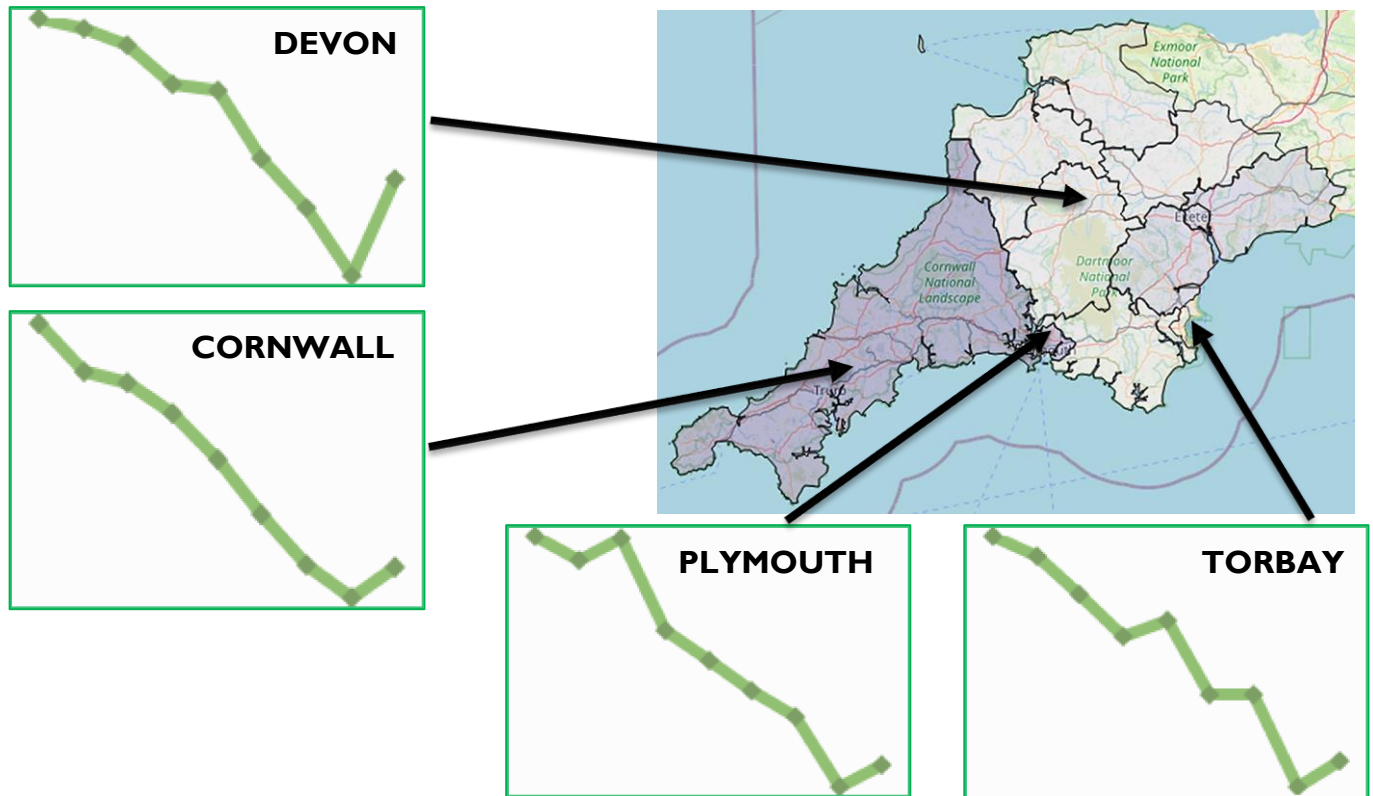
By looking at an academic year percentage rate of births for the corresponding school year, we are able to estimate the number of pupils who will potentially be looking for school places in the following four years as below. There is around about a 92% transfer rate of births to school places:



## NEIGHBOURING LA'S AND NATIONAL BIRTH RATE

Births in neighbouring LA's and nationally are following a similar pattern to that seen in Plymouth; that overall since 2013, the birth rate has declined.

Birth data from the ONS\* shows data in calendar year, which is showing all areas with an uptick in 2021, following a steady decline from 2013.



\*Sparklines created from ONS NOMIS table; Live Births in England and Wales (down to Local Authority areas); fertility age 20-34; years 2013-2021

2021 is showing a larger number of births than previous years for Plymouth and its neighbouring three LA's. However the table below includes the figure from the ONS's annual summary statistics of live births, stillbirths and fertility rates for 2022.

One of the six main points that the publication makes is:

“There were 605,479 live births in England and Wales in 2022, a 3.1% decrease from 624,828 in 2021 and the lowest number since 2002; the number remains in line with the recent trend of decreasing live births seen before the coronavirus (COVID-19) pandemic.”

[Births in England and Wales - Office for National Statistics \(ons.gov.uk\)](https://www.ons.gov.uk/births-in-england-and-wales)

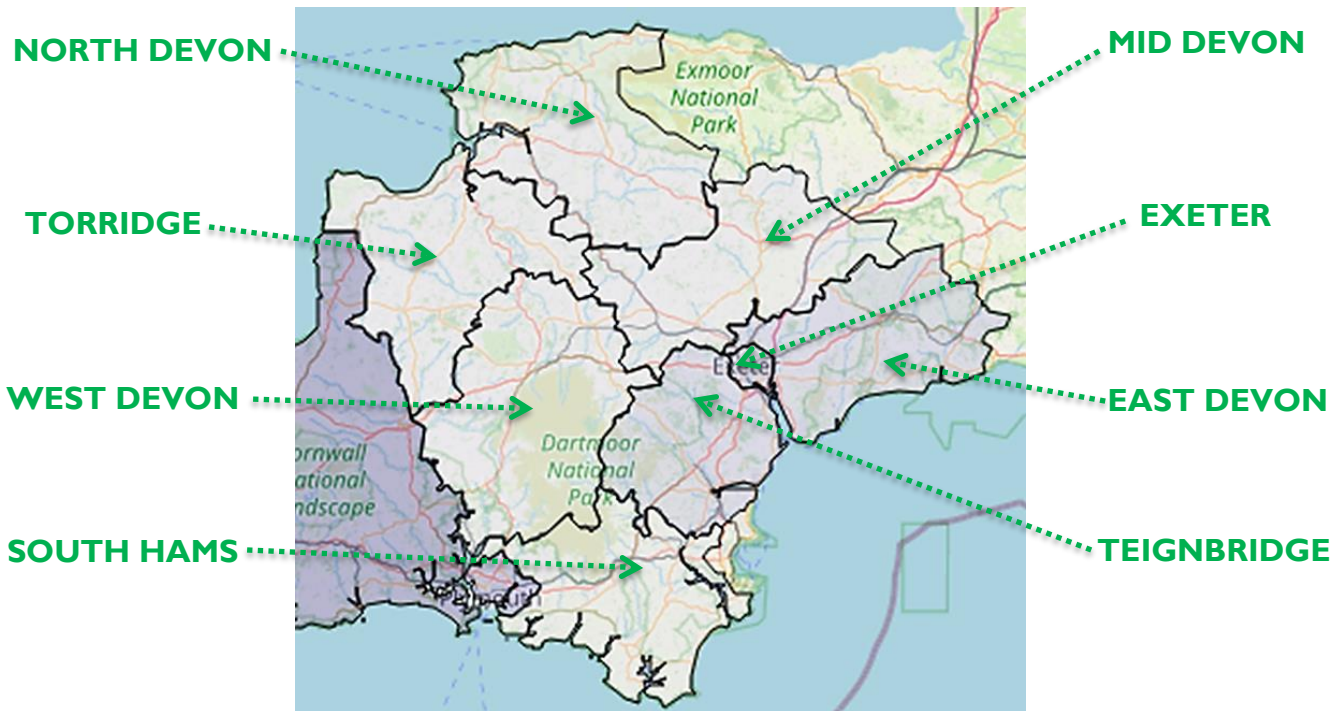
Although this release has not broken birth data down to age of mother, all areas are showing a decline on 2021 figures, which will only be smaller once we specify age ranges.

When we look at Devon broken down by district, we can see that the districts that are most likely to impact Plymouth, West Devon and South Hams, follow a similar pattern to Plymouth, with the % drop from the largest number of births in period 2013-2022 to the smallest being:

- **Plymouth:** -23.8%
- **South Hams:** -20.8%
- **West Devon:** -21.6%

AREA	2013	2014	2015	2016	2017	2018	2019	2020	2021	2022	Drop from 2021-2022
Cornwall	5581	5425	5393	5294	5152	4979	4814	4715	4811	4456**	-355
East Devon	1107	1166	1180	1139	1171	1157	1147	1128	1269	1122	-147
Exeter	1384	1346	1322	1292	1329	1196	1170	1143	1173	1107	-66
Mid Devon	783	805	803	737	779	752	778	743	703	628	-75
North Devon	954	933	868	946	901	840	820	782	825	773	-52
South Hams	648	702	677	599	621	615	634	556	641	575	-66
Teignbridge	1206	1169	1177	1155	1150	1177	1134	1056	1098	1015	-83
Torrige	630	565	614	632	557	565	496	523	516	512	-4
West Devon	473	467	454	464	432	410	371	389	419	400	-19
Plymouth	3163	3101	3160	2912	2832	2754	2683	2497	2556	2409	-147
Torbay	1474	1443	1380	1314	1339	1220	1220	1074	1114	1010	-104
England	664517	661499	664399	663157	646794	625651	610505	585195	595948	577046	-18902

\*\* the figure for Cornwall in 2022 includes the births of those in the Isles of Scilly



## PRIMARY

In line with the declining birth rate, the table below shows the birth rates across the localities over the past 17 years, with rag rating applied to the year with the highest to lowest births. This shows that all localities have experienced reductions as indicated above

Locality Births	2006-07	2007-08	2008-09	2009-10	2010-11	2011-12	2012-13	2013-14	2014-15	2015-16	2016-17	2017-18	2018-19	2019-20	2020-21	2021-22	2022-23
Central	538	589	622	499	531	552	475	498	512	468	455	428	424	418	428	403	413
North	458	457	458	419	499	490	500	465	442	431	390	407	425	370	377	384	369
North West	437	414	386	423	427	419	435	406	367	337	336	330	296	287	319	286	275
Plympton	344	323	341	365	356	331	317	272	305	312	231	246	282	262	256	245	226
Plymstock	227	234	233	228	279	235	258	219	234	253	207	231	229	217	197	192	199
South	358	377	362	404	412	458	425	403	435	397	387	378	374	314	311	293	325
South West	336	306	366	375	344	365	320	305	315	294	280	253	287	233	212	260	206
West	461	496	458	471	475	476	457	464	466	449	454	430	399	346	340	373	327
	3159	3196	3226	3184	3323	3326	3187	3032	3076	2941	2740	2703	2716	2447	2440	2436	2340

### Available places

Figures for Normal Point of Entry (Reception) are shown below for the academic year 2024/25 and what will likely happen from 25/26 moving forward:

Locality	NPE - Academic Year 24/25 (Based on determined PAN)	NPE - Academic Years 25/26 onwards (Based on "built to" capacity or normal operating method/FA)	Additional information/ Reason for number change
Central	390	420	Salisbury Road have a built capacity of 90 per year group through a BN expansion – however have determined a PAN of 60 for the past four years. It is likely this will continue, but this has not yet been confirmed.
North	645	645	
North West	365	365	
Plympton	360	420	Woodford has a built capacity of 90 per year group through a targeted basic need expansion – however have determined a PAN of 60 for the past seven years. It is likely this will continue but this has not yet been confirmed
Plymstock	330	330	
South	452	467	Mount Wise has a built capacity of 60 per year group through a BN expansion – however have determined a PAN of 30 and then 45 for the past five years. It is likely this will continue but this has not yet been confirmed

South West	240	240	
West	520	530	Plaistow Hill Infant and St Budeaux Junior both became primary schools from September 2023, taking a joint overall capacity of 60 per year group to 30 per year group for each school. This was planned for on a staggered approach so 24/25 has had both schools determine a PAN of 20 with an expected move to 25 the next year (25/26) and 30 the following (26/27). However depending on application numbers either school could amend their approach to becoming a IFE primary.

The following tables show the capacity of our primary localities for the next four years forecasts and following notes apply:

- Four years has been examined as we have complete academic year birth numbers for the corresponding year groups.
- The figures next to the name of each school is the average whole school forecast over the next four years, when analysing forecast NOR against either a confirmed PAN or the figure on a funding agreement//net capacity figure. Red figures indicate a surplus of more than a quarter of a school's capacity.
- Schools which have negative capacity are those that tend to go over 30 per class once pupils are in KS2 (no longer have infant class size restrictions).
- 'Full to capacity' indicates those schools who have less than 5% capacity.
- Consistently oversubscribed – Oversubscribed for at least five of the last seven years (7 years representing the current cohorts in the school)



## Central

	PAN	YrR	Y1	Y2	Y3	Y4	Y5	Y6	Total
<b>2024</b>	<b>390</b>	<b>346</b>	<b>342</b>	<b>372</b>	<b>377</b>	<b>384</b>	<b>382</b>	<b>360</b>	<b>2563</b>
<b>2024 as of today</b>	<b>Admit to On Roll</b>	<b>375</b>	<b>375</b>	<b>375</b>	<b>394</b>	<b>388</b>	<b>394</b>	<b>390</b>	<b>2691</b>
		<b>358</b>	<b>350</b>	<b>373</b>	<b>382</b>	<b>384</b>	<b>387</b>	<b>365</b>	<b>2599</b>
<b>2025</b>	<b>390</b>	<b>366</b>	<b>351</b>	<b>346</b>	<b>373</b>	<b>379</b>	<b>390</b>	<b>383</b>	<b>2587</b>
2026	420	353	367	351	346	373	382	390	2563
2027	420	347	354	367	354	347	373	386	2527
2028	420	330	348	355	364	353	348	372	2470

YrR	Y1	Y2	Y3	Y4	Y5	Y6	Total
11%	12%	5%	10%	9%	9%	14%	10%
5%	7%	1%	3%	1%	2%	6%	3%
6%	10%	11%	4%	10%	7%	9%	8%
16%	6%	10%	11%	4%	9%	7%	9%
17%	16%	6%	9%	11%	4%	8%	10%
21%	17%	16%	7%	9%	11%	5%	12%

3159	Compton CE Primary	-2%	2640	Laira Green Primary	37%	3777	High View Primary	2%
2671	Lipson Vale Primary	4%	2010	Hyde Park Infant	8%	2008	Mount Street Primary	0%
2636	Hyde Park Junior	6%	3774	Salisbury Road Primary	21%			

A locality with many popular schools and where the number of schools is relatively small in comparison to some of the other localities. However, these schools do draw pull pupils from other localities. Many schools are on constrained sites which had limited capacity for expansion in previous considerations. There is a lack of physical space and no available build site for a new establishment should one be needed.

Forecast reduction 2023/24 to 2027/28	-4.6%
Consistently oversubscribed	High View and Compton CE
Full to capacity for next four years	High View, Compton CE, Lipson Vale, Mount Street
Previous expansion/building works	<ul style="list-style-type: none"> <li>Salisbury Road Primary – BN expansion project in 2012/13 to move from a 2FE to 3FE.</li> <li>Lipson Vale Primary – BN project in 2012/13 to move the school to a full 2FE school from offering 55 places per year, through remodelling and small expansion of particular classrooms.</li> <li>Laira Green – BN funding provided to accommodate a bulge year in 2014/15, which has now left the school.</li> <li>Compton CE – Had a project in 2010/11 to support their move of 50 per year group to 60 – not part of BN</li> </ul>
Action already taken to mitigate decreasing numbers	<ul style="list-style-type: none"> <li>Salisbury Road have taken 60 at NPE for the last four years.</li> <li>Laira Green have requested to lower their PAN from 45 to 30 – but the LA has so far declined as capacity within older year groups is limited</li> </ul>

**North**

	PAN	YrR	Y1	Y2	Y3	Y4	Y5	Y6	Total
<b>2024</b>	<b>645</b>	<b>520</b>	<b>532</b>	<b>507</b>	<b>539</b>	<b>546</b>	<b>572</b>	<b>595</b>	<b>3811</b>
<b>2024 as of today</b>	<b>Admit to On Roll</b>	<b>645</b>	<b>585</b>	<b>585</b>	<b>583</b>	<b>566</b>	<b>632</b>	<b>634</b>	<b>4230</b>
		<b>529</b>	<b>541</b>	<b>514</b>	<b>548</b>	<b>550</b>	<b>576</b>	<b>598</b>	<b>3856</b>
<b>2025</b>	<b>645</b>	<b>459</b>	<b>520</b>	<b>534</b>	<b>508</b>	<b>535</b>	<b>548</b>	<b>572</b>	<b>3676</b>
2026	645	467	457	520	526	499	532	549	3550
2027	645	473	465	455	515	519	496	529	3453
2028	645	461	472	465	452	508	518	495	3370

YrR	Y1	Y2	Y3	Y4	Y5	Y6	Total
19%	18%	21%	16%	15%	11%	8%	16%
<b>18%</b>	<b>8%</b>	<b>12%</b>	<b>6%</b>	<b>3%</b>	<b>9%</b>	<b>6%</b>	<b>9%</b>
<b>29%</b>	<b>19%</b>	<b>17%</b>	<b>21%</b>	<b>17%</b>	<b>15%</b>	<b>11%</b>	<b>19%</b>
28%	29%	19%	18%	23%	18%	15%	21%
27%	28%	29%	20%	20%	23%	18%	24%
28%	27%	28%	30%	21%	20%	23%	25%

2004	Austin Farm Primary	<b>49%</b>	3770	Beechwood Primary	<b>38%</b>	2703	Eggbuckland Vale Primary	<b>21%</b>
2009	Tor Bridge Primary	<b>16%</b>	2730	Leigham Primary	<b>26%</b>	2677	Manadon Vale Primary	<b>2%</b>
3769	Oakwood Primary	<b>33%</b>	3162	St Edward's CE Primary	<b>9%</b>	2708	Thornbury Primary	<b>18%</b>
2702	Widewell Primary	<b>6%</b>	2681	Widely Court Primary	<b>15%</b>	2002	St Matthew's CE Primary	<b>29%</b>

A large locality with two of the city's five 3FE primary schools. A large housing development (which is still being built) meant that the LA sought Targeted Basic Need in preparation for the increase in pupil numbers. The reduction in pupil numbers over the next five years is in line with the overall city decrease and similar to the decrease seen in the North West.

Forecast reduction 2023/24 to 2027/28	-17.1%
Consistently oversubscribed	Manadon Vale
Full to capacity for next four years	Manadon Vale
Previous expansion/building works	<ul style="list-style-type: none"> <li>St Matthew's CE Primary – new 3FE school built in response to a large housing development at Derriford. Opened Sept 2015. Original plan was to split the funding between a new 2FE school and increasing Widewell from 1FE to 2FE. However, Widewell withdrew from the process when a requested rebuild was declined for an expansion of the current building. Therefore, St Matthew's became a 3FE</li> <li>Oakwood Primary – Following academisation, took the decision to move from a 1.5FE to a 2FE school, by reconfiguring its own space. Funding agreement has been updated to reflect the 420 capacity.</li> <li>Austin Farm Primary – received BN funding to reconfigure internal space, to support the reduction from a 1.5 FE to a 1FE to prevent the possibility of the school becoming unsustainable.</li> </ul>
Action already taken to mitigate decreasing numbers	<ul style="list-style-type: none"> <li>St Matthew's CE – Contacted the LA to request determine a PAN of 60 over 90 to mitigate smaller numbers but understands that it would be requested to return to higher admission numbers should numbers begin to grow again.</li> <li>Year group capping is being implemented in particular year groups at Austin Farm (Y4&amp;5), Beechwood (Y1,3&amp;4), Oakwood (Y1,3&amp;4) and St Matthew's (Y1,2,3&amp;4)</li> </ul>

## North West

	PAN	YrR	Y1	Y2	Y3	Y4	Y5	Y6	Total
<b>2024</b>	<b>365</b>	<b>268</b>	<b>273</b>	<b>288</b>	<b>290</b>	<b>300</b>	<b>298</b>	<b>328</b>	<b>2045</b>
<b>2024 as of today</b>	<b>Admit to On Roll</b>	<b>365</b>	<b>320</b>	<b>335</b>	<b>340</b>	<b>325</b>	<b>340</b>	<b>350</b>	<b>2375</b>
		<b>277</b>	<b>272</b>	<b>295</b>	<b>298</b>	<b>311</b>	<b>299</b>	<b>333</b>	<b>2085</b>
<b>2025</b>	<b>365</b>	<b>222</b>	<b>274</b>	<b>275</b>	<b>290</b>	<b>292</b>	<b>300</b>	<b>296</b>	<b>1948</b>
2026	365	252	225	274	275	287	291	298	1901
2027	365	225	254	228	272	270	286	288	1821
2028	365	221	227	255	227	269	269	284	1752

YrR	Y1	Y2	Y3	Y4	Y5	Y6	Total
27%	25%	21%	21%	14%	15%	6%	19%
<b>24%</b>	<b>15%</b>	<b>12%</b>	<b>12%</b>	<b>4%</b>	<b>12%</b>	<b>5%</b>	<b>12%</b>
<b>39%</b>	<b>25%</b>	<b>25%</b>	<b>21%</b>	<b>20%</b>	<b>14%</b>	<b>15%</b>	<b>23%</b>
31%	38%	25%	25%	21%	20%	15%	25%
38%	31%	38%	26%	26%	22%	21%	29%
39%	38%	30%	38%	26%	26%	22%	31%

3767 Ernesettle Primary **17%**  
 3775 Shakespeare Primary **24%**  
 2672 Woodfield Primary **14%**

2639 Knowle Primary **43%**  
 3766 St Peter's RC Primary **52%**

3161 Mary Dean CE Primary **15%**  
 2729 Whiteleigh Primary **32%**

Following a fairly steady level of pupil forecasts, this locality will experience one of the largest reduction of pupils. Whole school forecasts however are levelled by the larger year groups at the top of the school as smaller year groups enter at the bottom. One popular school's decision to expand on top of a previous BN expansion may unfortunately come at the detriment of the neighbouring schools.

Forecast reduction 2023/24 to 2027/28	-16.1%
Consistently oversubscribed	None
Full to capacity for next four years	None
Previous expansion/building works	<ul style="list-style-type: none"> <li>Ernesettle Primary – BN project to expand the school from a 1FE to 2FE in 2011/12. In 2020/21, following a number of years being oversubscribed the school made the decision to increase again to an intake of 75 at NPE (2.5 FE). The funding agreement has been amended to accommodate 75 pupils in all year groups, however the school has implemented the larger number in intake from the bottom up.</li> <li>Knowle Primary – Condition project undertaken in 2015/16 to rebuild the school and safeguard the 420 places it provides</li> </ul>
Action already taken to mitigate decreasing numbers	<ul style="list-style-type: none"> <li>Year group capping seen in Knowle (Y1,2,3&amp;4) and St Peter's RC (Y1,3,4&amp;5).</li> </ul>

### Plympton

	PAN	YrR	Y1	Y2	Y3	Y4	Y5	Y6	Total
<b>2024</b>	<b>390</b>	<b>311</b>	<b>286</b>	<b>291</b>	<b>343</b>	<b>345</b>	<b>340</b>	<b>354</b>	<b>2270</b>
<b>2024 as of today</b>	<b>Admit to On Roll</b>	<b>390</b>	<b>345</b>	<b>349</b>	<b>378</b>	<b>363</b>	<b>363</b>	<b>371</b>	<b>2559</b>
		<b>314</b>	<b>287</b>	<b>292</b>	<b>346</b>	<b>349</b>	<b>341</b>	<b>358</b>	<b>2287</b>
<b>2025</b>	<b>360</b>	<b>280</b>	<b>312</b>	<b>287</b>	<b>295</b>	<b>344</b>	<b>348</b>	<b>339</b>	<b>2207</b>
2026	420	303	278	311	290	294	344	347	2168
2027	420	280	301	278	313	289	295	342	2098
2028	420	252	279	301	281	312	290	294	2008

YrR	Y1	Y2	Y3	Y4	Y5	Y6	Total
20%	27%	25%	12%	12%	6%	9%	16%
<b>19%</b>	<b>17%</b>	<b>16%</b>	<b>8%</b>	<b>4%</b>	<b>6%</b>	<b>4%</b>	<b>11%</b>
<b>22%</b>	<b>20%</b>	<b>26%</b>	<b>24%</b>	<b>12%</b>	<b>11%</b>	<b>6%</b>	<b>17%</b>
28%	23%	20%	26%	25%	12%	11%	21%
33%	28%	23%	20%	26%	24%	12%	24%
40%	34%	28%	22%	20%	26%	25%	28%

2694	Boringdon Primary	<b>14%</b>	3771	Chaddlewood Primary	<b>18%</b>	2705	Glen Park Primary	<b>6%</b>
3760	Plympton St Mary Infant	<b>37%</b>	2699	Old Priory Junior	<b>35%</b>	2695	Plympton St Maurice Primary	<b>22%</b>
2005	Woodford Primary	<b>15%</b>	2707	Yealmpstone Farm Primary	<b>52%</b>			

A popular locality which when numbers were low in the past, has drawn pupils from other localities. In line with the rest of the city, there has been a recent decline in births, however it should be noted that it is a locality that families will move to for both property and school places. The locality borders another LA (Devon) and as such a number of sites which could be developed for housing sit outside Plymouth’s boundary. Therefore, any additional school places would be agreed on consultation with Devon.

Forecast reduction 2023/24 to 2027/28	-13.1%
Consistently oversubscribed	None
Full to capacity for next four years	None
Previous expansion/building works	<ul style="list-style-type: none"> <li>Woodford Primary - expanded with TBN from a 2FE to 3FE school in 2015/16. Significant additional funding was given to the school. Following sponsored academisation, the school has admitted to 60 since Sept 2018. The school has determined its 2024/25 PAN at 60, but without further confirmation the LA forecasts on its expanded capacity.</li> <li>Yealmpstone Farm – expanded with S106 and Basic Need funding in response to Woodford reducing its intake. 2FE first offered in Sept 2020, filling from the bottom up.</li> <li>Plympton St Mary Infant - BN funding in 2012/2013 to accommodate an expansion due to a bulge year of 90 in total. However this didn’t fill and numbers fell once the cohort reached the junior school which meant that expansion work was not replicated in the junior school.</li> </ul>
Action already taken to mitigate decreasing numbers	<ul style="list-style-type: none"> <li>Yealmpstone Farm has consulted to reduce its PAN back to 30, but at present the LA does not back this change.</li> <li>Plympton St Mary Infant has consulted to reduce its PAN to 30 from 60 for September 2024. There is a proposal that Plympton St Mary and Old Prior Junior will reduce their intakes eventually to 30, from the bottom up from Sept 2024 and provision for both schools will operate from the Old Priory site. It is unclear whether the schools will remain separate infant and junior or whether they will amalgamate to form a primary.</li> </ul>

**Plymstock**

	PAN	YrR	Y1	Y2	Y3	Y4	Y5	Y6	Total
<b>2024</b>	<b>330</b>	<b>269</b>	<b>279</b>	<b>266</b>	<b>313</b>	<b>311</b>	<b>287</b>	<b>308</b>	<b>2033</b>
<b>2024 as of today</b>	<b>Admit to On Roll</b>	<b>330</b>	<b>330</b>	<b>330</b>	<b>334</b>	<b>334</b>	<b>334</b>	<b>334</b>	<b>2326</b>
		<b>273</b>	<b>279</b>	<b>271</b>	<b>321</b>	<b>313</b>	<b>290</b>	<b>310</b>	<b>2057</b>
<b>2025</b>	<b>330</b>	<b>285</b>	<b>280</b>	<b>279</b>	<b>275</b>	<b>318</b>	<b>315</b>	<b>292</b>	<b>2045</b>
2026	330	248	287	277	284	278	316	316	2006
2027	330	228	252	283	282	283	279	314	1922
2028	330	258	232	250	288	283	282	279	1872

YrR	Y1	Y2	Y3	Y4	Y5	Y6	Total
18%	15%	19%	5%	6%	13%	7%	12%
<b>17%</b>	<b>15%</b>	<b>18%</b>	<b>4%</b>	<b>6%</b>	<b>13%</b>	<b>7%</b>	<b>12%</b>
<b>14%</b>	<b>15%</b>	<b>15%</b>	<b>17%</b>	<b>4%</b>	<b>4%</b>	<b>11%</b>	<b>11%</b>
25%	13%	16%	14%	16%	4%	4%	13%
31%	24%	14%	14%	14%	15%	5%	17%
22%	30%	24%	13%	14%	15%	16%	19%

2688 Morley Meadow Primary 2% 2701 Elburton Primary 1% 2006 Goosewell Primary 38%  
 2691 Hooe Primary 1% 2693 Oreston Primary 20% 2696 Pomphlett Primary 4%

A consistently popular locality that families move to for both property and school places. It has had the smallest reduction of births of all localities. The locality is home to a large housing development within its boundary (Saltram Meadow) and the Sherford development on the locality’s outskirts, which is split between Plymouth and Devon LA’s. The provision of school places for Sherford has been the responsibility of Devon and has been accommodated through the provision of a new primary school on site.

Forecast reduction 2023/24 to 2027/28	-9.8%
Consistently oversubscribed	Elburton, Hooe
Full to capacity for next four years	Morley Meadow, Elburton, Hooe, Pomphlett
Previous expansion/building works	<ul style="list-style-type: none"> <li>Pomphlett Primary – received S106 and BN funding to expand from 1FE to 2FE in 2016/17. Initially a temporary expansion, to bridge the gap whilst a large housing development with its own proposed primary school was developed. However, due to the slow build-out of the development, the expansion was made permanent.</li> <li>Morley Meadow Primary – as the housing development above did not build out to schedule, the proposed primary school was too late in coming forward to accommodate the pupils the development generated. Therefore, Dunstone Primary, which had serious condition concerns, was relocated to the development to fulfil the S106 agreement; built as a 1FE school but with the capability to expand to a 2FE school should additional pupil places be required.</li> <li>Oreston Primary – the school became an academy in Jan 2011 and through its own decision went from offering 45 places to 56 in 2014/15 and 60 places in 2017/18, based on being oversubscribed at those points in time. Although this was not a decision made on consultation with the LA, BN funding was subsequently provided in order to support the demand for places in the locality. Part of the conditions in providing the BN funding was that Oreston were to amend their FA to 60 from 45, a change that is still yet to take place.</li> </ul>
Action already taken to mitigate decreasing numbers	<ul style="list-style-type: none"> <li>None of Plymstock’s primary schools are currently implementing caps within any year groups, in fact Elburton and Hooe consistently offer more places in their KS2 classes (2 additional places per year group)</li> </ul>

**South**

	PAN	YrR	Y1	Y2	Y3	Y4	Y5	Y6	Total
<b>2024</b>	<b>452</b>	<b>338</b>	<b>326</b>	<b>347</b>	<b>327</b>	<b>356</b>	<b>357</b>	<b>333</b>	<b>2384</b>
<b>2024 as of today</b>	<b>Admit to On Roll</b>	<b>452</b>	<b>354</b>	<b>378</b>	<b>356</b>	<b>366</b>	<b>375</b>	<b>349</b>	<b>2630</b>
		<b>346</b>	<b>331</b>	<b>358</b>	<b>334</b>	<b>362</b>	<b>368</b>	<b>336</b>	<b>2435</b>
<b>2025</b>	<b>452</b>	<b>273</b>	<b>340</b>	<b>338</b>	<b>349</b>	<b>329</b>	<b>361</b>	<b>354</b>	<b>2343</b>
2026	467	266	273	347	340	351	335	358	2269
2027	467	259	266	280	350	346	356	338	2194
2028	467	269	258	272	282	352	349	356	2138

YrR	Y1	Y2	Y3	Y4	Y5	Y6	Total
25%	28%	23%	25%	24%	24%	29%	25%
<b>23%</b>	<b>6%</b>	<b>5%</b>	<b>6%</b>	<b>1%</b>	<b>2%</b>	<b>4%</b>	<b>7%</b>
<b>40%</b>	<b>25%</b>	<b>25%</b>	<b>23%</b>	<b>25%</b>	<b>23%</b>	<b>24%</b>	<b>26%</b>
43%	40%	23%	25%	22%	23%	23%	<b>29%</b>
45%	43%	38%	23%	23%	21%	23%	<b>31%</b>
42%	45%	42%	38%	22%	23%	21%	<b>33%</b>

3763 Cathedral School of St Mary	4%	2007 High Street Primary	39%	3761 Holy Cross RC Primary	7%
2682 Marlborough Primary	53%	2674 Mount Wise Primary	43%	2646 Pilgrim Primary	15%
2724 Prince Rock Primary	11%	3160 St Andrew's CE Primary	1%	2001 St George's CE Primary	28%
3765 St Joseph's RC Primary	2%	3759 St Peter's CE Primary	39%	4006 Millbay Academy	85%

This locality is geographically small yet contains the largest number of schools of all the localities. In addition, there are significant differences between the schools with and without surplus. During the increased birth period, the south saw the largest increase of births with the number in 2018/19 being nearly double in comparison with 2006. As such the largest number of expansion projects were undertaken in this locality. Due to the high level of investment, the LA should push to preserve the capacity created here should this be challenged by the DfE or by MATs.

Forecast reduction 2023/24 to 2027/28	-10.7%
Consistently oversubscribed	St Andrew's CE
Full to capacity for next four years	Cathedral, St Andrew's CE, St Joseph's RC
Previous expansion/building works	<ul style="list-style-type: none"> <li>Prince Rock Primary – BN expansion from 1FE to 2FE in 2011/12</li> <li>Mount Wise Primary – BN expansion from 1FE to 2FE in 2011/2012. However not all places are being made available and lower PAN's are consistently determined.</li> <li>St Joseph's RC Primary – BN expansion from 17 places per year to a full FE in 2012/13.</li> <li>Despite BN funding, Mount Wise and St Joseph's expansions took into account a large regeneration project in the Devonport area.</li> <li>Pilgrim Primary – BN expansion from 1FE to 2FE in 2013/14</li> <li>Holy Cross RC Primary – Targeted BN in response to demand, moving the school from a 1FE to 1.5FE school in 2014/15.</li> <li>St Peter's CE Primary – BN funding to move the school from offering 25 places to a full FE 2014/15. BN but also undertaken as part of a move for all primary schools to take full forms of entry (multiples of 30)</li> </ul>

	<ul style="list-style-type: none"> <li>• Plymouth School of Creative Arts - An all-through (5-16yrs) free school opened in 2015/16 with a 2FE primary provision. Concerns regarding standards saw the school become a sponsored academy in a MAT and renamed to Millbay Academy.</li> </ul>
<p>Action already taken to mitigate decreasing numbers</p>	<ul style="list-style-type: none"> <li>• High Street and Millbay Academy, both of the same MAT – are operating a merged primary provision with 30 places provided instead of the potential 90. There are concerns regarding how waiting lists operate and how pupils are allocated as there is a demand for places at these schools, however whilst there is such a low demand for places across the locality in general, this is not causing issue or reason for challenge at the moment.</li> <li>• In response to a low take up of places, Mount Wise has determined a smaller PAN (either 30 or 45) for the past four years and has shown past reluctance to offer the built capacity of the school.</li> <li>• Marlborough Primary is capping year groups 1 to 6, Pilgrim has a small cap on year groups 1,2,3 and 6, St Peter's CE has caps on year groups 3 to 6. These caps whilst beneficial for individual school are causing pressures within specific year groups</li> </ul>

//Next page



**South West**

	PAN	YrR	Y1	Y2	Y3	Y4	Y5	Y6	Total
<b>2024</b>	<b>240</b>	<b>213</b>	<b>193</b>	<b>208</b>	<b>210</b>	<b>218</b>	<b>228</b>	<b>216</b>	<b>1486</b>
<b>2024 as of today</b>	<b>Admit to On Roll</b>	<b>240</b>	<b>240</b>	<b>237</b>	<b>228</b>	<b>224</b>	<b>231</b>	<b>237</b>	<b>1637</b>
		<b>219</b>	<b>195</b>	<b>224</b>	<b>217</b>	<b>223</b>	<b>230</b>	<b>221</b>	<b>1529</b>
<b>2025</b>	<b>240</b>	<b>154</b>	<b>215</b>	<b>197</b>	<b>208</b>	<b>211</b>	<b>220</b>	<b>230</b>	<b>1435</b>
2026	240	136	157	218	196	207	213	223	1350
2027	240	172	138	161	217	197	209	215	1308
2028	240	139	174	141	160	217	198	213	1242

YrR	Y1	Y2	Y3	Y4	Y5	Y6	Total
11%	20%	13%	13%	9%	5%	10%	12%
9%	19%	5%	5%	0%	0%	7%	7%
36%	10%	18%	13%	12%	9%	4%	15%
43%	35%	9%	18%	14%	11%	7%	20%
28%	42%	33%	10%	18%	13%	11%	22%
42%	28%	41%	33%	10%	17%	11%	26%

2639	College Road Primary	6%	2665	Drake Primary	35%	2630	Ford Primary	24%
3762	Keyham Barton RC Primary	32%	2683	Morice Town Primary	24%	2657	Stoke Damerel Primary	12%
2659	Stuart Road Primary	19%						

This locality has a fairly small concentration of schools in comparison to its neighbours in the West and South. This locality has experienced the biggest decrease in births from its peak in 2009/10 to last year’s lowest recorded number of births, which is reflected in the largest drop in forecasted numbers from 2023/24 to 2027/28. However there has been a fairly steady level of pupils in the locality, which can be seen in the relatively small number of year group caps.

Forecast reduction 2023/24 to 2027/28	-20.4%
Consistently oversubscribed	College Road
Full to capacity for next four years	Likely College Road (sits just above 5% capacity estimate)
Previous expansion/building works	<ul style="list-style-type: none"> <li>Stoke Damerel Primary – BN expansion to move from a 1.5 FE to 2FE school in 2012/2013</li> <li>Stoke Damerel Primary was only school which had the capacity to expand within the locality. Many schools are on constricted sites and/or have older school buildings which would require significant change to alter or reconfigure.</li> </ul>
Action already taken to mitigate decreasing numbers	<ul style="list-style-type: none"> <li>Year group capping is taking place in some schools but aside from Keyham Barton, these caps are minimal. There are small caps at College Road in Yr2,4 &amp; 6 and at Drake in Yr4. Keyham Barton has larger caps in Yr3,4 and 5.</li> </ul>

**West**

	PAN	YrR	Y1	Y2	Y3	Y4	Y5	Y6	Total
<b>2024</b>	<b>520</b>	<b>401</b>	<b>417</b>	<b>420</b>	<b>460</b>	<b>444</b>	<b>449</b>	<b>451</b>	<b>3042</b>
<b>2024 as of today</b>	<b>Admit to On Roll</b>	<b>520</b>	<b>485</b>	<b>472</b>	<b>504</b>	<b>501</b>	<b>516</b>	<b>516</b>	<b>3514</b>
		<b>406</b>	<b>425</b>	<b>422</b>	<b>457</b>	<b>445</b>	<b>453</b>	<b>450</b>	<b>3058</b>
<b>2025</b>	<b>520</b>	<b>330</b>	<b>401</b>	<b>416</b>	<b>426</b>	<b>460</b>	<b>449</b>	<b>449</b>	<b>2932</b>
2026	530	320	329	403	427	422	462	450	2813
2027	540	341	318	331	410	421	424	462	2707
2028	540	315	339	320	337	406	424	424	2565

YrR	Y1	Y2	Y3	Y4	Y5	Y6	Total
<b>23%</b>	<b>31%</b>	<b>30%</b>	<b>23%</b>	<b>26%</b>	<b>25%</b>	<b>25%</b>	<b>26%</b>
<b>22%</b>	<b>12%</b>	<b>11%</b>	<b>9%</b>	<b>11%</b>	<b>12%</b>	<b>13%</b>	<b>13%</b>
<b>37%</b>	<b>23%</b>	<b>31%</b>	<b>29%</b>	<b>23%</b>	<b>25%</b>	<b>25%</b>	<b>27%</b>
<b>40%</b>	<b>37%</b>	<b>22%</b>	<b>29%</b>	<b>30%</b>	<b>23%</b>	<b>25%</b>	<b>29%</b>
<b>37%</b>	<b>40%</b>	<b>36%</b>	<b>21%</b>	<b>30%</b>	<b>29%</b>	<b>23%</b>	<b>31%</b>
<b>42%</b>	<b>37%</b>	<b>40%</b>	<b>35%</b>	<b>22%</b>	<b>29%</b>	<b>29%</b>	<b>33%</b>

2000	Mayflower Primary	<b>2%</b>	3768	Montpelier Primary	<b>0%</b>	2670	Pennycross Primary	<b>16%</b>
2668	Plaistow Hill Primary	<b>59%</b>	3757	St Budeaux CE Primary	<b>81%</b>	3772	Riverside Primary	<b>46%</b>
2003	St Paul's RC Primary	<b>32%</b>	2660	Victoria Road Primary	<b>22%</b>	2627	Weston Mill Primary	<b>66%</b>
2021	Marine Academy Primary	<b>5%</b>						

This locality maintained a fairly steady level of pupils before seeing a reduction this academic year, which is forecast to continue. It has two of the city's five 3FE primary schools and two historically consistently oversubscribed schools, which attract pupils from outside the locality. There is one very popular school which continuously has a high demand for places, and can be considered to be an outlier in terms of its inclusion in the West locality. However the LA currently uses the boundaries of our local housing development team, and there have always been schools which are considered outliers no matter what boundaries have been used for pupil place planning.

Forecast reduction 2023/24 to 2027/28	-18.0%
Consistently oversubscribed	Mayflower, Montpelier, Marine Academy Primary
Full to capacity for next four years	Mayflower, Montpelier, Marine Academy Primary
Previous expansion/building works	<ul style="list-style-type: none"> <li>Weston Mill Primary – BN expansion moving from a 1.5FE to 2FE, through reconfigured spaces rather than new buildings, in 2011/12</li> <li>Riverside Primary – BN expansion from 2FE to 3FE, in 2012/2013</li> <li>Montpelier Primary – minor BN works undertaken in order for the school to take a bulge year in 2012/13, taking 120 pupils</li> <li>Victoria Road – BN project undertaken in order for the school to take a bulge year of an additional 30 pupils (60 total) in 2012/13</li> <li>Marine Academy Primary – 2FE free school opened in September 2013</li> <li>Pennycross Primary – BN and S106 expansion (from nearby housing development) to move the school to a 2FE school from 1.5FE.</li> </ul>
Action already taken to mitigate decreasing numbers	<ul style="list-style-type: none"> <li>Weston Mill now caps all year groups to 30 pupils once past reception NPE. They are looking to create a nursery provision within the space they now find themselves with.</li> </ul>

	<ul style="list-style-type: none"> <li>Plaistow Hill Infant and St Budeaux CE Junior who used to offer 2FE combined, have both become 1FE primary schools from Sept 2023. Although the overall number of places offered has not changed, splitting a reduced number of potential NPE pupils (due to a declining birth rate) has not proved beneficial for the junior school who do not have the history of providing reception and KS1 places that the infant school has. In addition to this, as the previous infant school, can not offroll pupils at the end of Y2, the once junior school is disadvantaged in that the number of pupils it used to receive in Y3, is significantly reduced. The sustainability of the previous junior school will need to be closely and consistently monitored. Both schools have reduced the number of NPE places they offer for the first few years of being primary schools, however the lack of trend data and low first choice preferences for each school for Sept 2023 entry, has reduced the forecasts for both schools quite significantly.</li> </ul>
--	--

### City Average

	PAN	YrR	Y1	Y2	Y3	Y4	Y5	Y6	Total
<b>2024</b>	<b>3332</b>	<b>2666</b>	<b>2648</b>	<b>2699</b>	<b>2859</b>	<b>2904</b>	<b>2913</b>	<b>2945</b>	<b>19634</b>
<b>2024 as of today</b>	<b>Admit to On Roll</b>	<b>3317</b>	<b>3034</b>	<b>3061</b>	<b>3117</b>	<b>3067</b>	<b>3185</b>	<b>3181</b>	<b>21962</b>
		<b>2722</b>	<b>2680</b>	<b>2749</b>	<b>2903</b>	<b>2937</b>	<b>2944</b>	<b>2971</b>	<b>19906</b>
<b>2025</b>	<b>3302</b>	<b>2369</b>	<b>2692</b>	<b>2673</b>	<b>2723</b>	<b>2868</b>	<b>2932</b>	<b>2915</b>	<b>19172</b>
2026	3417	2345	2373	2702	2683	2712	2875	2931	18621
2027	3427	2324	2349	2382	2712	2671	2718	2874	18031
2028	3427	2244	2328	2358	2391	2701	2678	2717	17416

YrR	Y1	Y2	Y3	Y4	Y5	Y6	Total
20%	22%	21%	17%	16%	15%	14%	18%
<b>18%</b>	<b>12%</b>	<b>10%</b>	<b>7%</b>	<b>4%</b>	<b>8%</b>	<b>7%</b>	<b>9%</b>
<b>28%</b>	<b>19%</b>	<b>22%</b>	<b>20%</b>	<b>16%</b>	<b>15%</b>	<b>15%</b>	<b>19%</b>
31%	28%	19%	21%	21%	16%	15%	22%
32%	31%	28%	19%	22%	20%	16%	24%
35%	32%	31%	28%	19%	22%	20%	27%

**Forecast reduction from 2023/24 to 2027/28 = 13.1%**

**SECONDARY****Available places**

As secondary places are planned for as an entire city, the following table shows the numbers for Normal Point of Entry (Year 7) for the academic year 2024/25 and what will likely happen from 25/26 moving forward for each secondary school:

<b>DfE</b>	<b>School</b>	<b>Current NPE PAN for 2023/24</b>	<b>Determined/ Agreed intake NPE PAN for 2024/25</b>	<b>Likely NPE PAN for 2025/26 onwards (Based on Funding Agreement/Typical operating style)</b>	<b>Additional information / Reason for change</b>
6905	All Saints CE Academy Plymouth	140	150	180	Determined PAN for 24/25 – 130 Agreed to take additional 20 for 2024/25 Funding Agreement identifies capacity at 180 per year group School used to admit 240 per year group which was dropped in 2009/10 when the school became a sponsored academy and had significant rebuilding/reconfiguration
4181	Coombe Dean School	180	180	180	Funding Agreement - 180
5406	Devonport High School for Boys	180	210	180	Determined PAN for 24/25 – 180 Agreed to take additional 30 for 2024/25 Funding Agreement identifies capacity at 174 per year group, but typical operating style since 2017/18 has been to take 180 at NPE
4152	Devonport High School for Girls	158	158	158	Determined PAN for 23/24 – 128, however admitted 30 over PAN to 158 Determined PAN for 24/25 – 158 Funding Agreement still identifies capacity at 120, but school has indicated it will be taking 158 from this point forward
4185	Eggbuckland Community College	180	210	180	Determined PAN for 24/25 – 180 Agreed to take additional 30 for 2024/25 Funding agreement identifies capacity at 180 per year group (1150 including 250 6 <sup>th</sup> form), however was amended from 210 per year (1300 including 250 6 <sup>th</sup> form) in 2016/17. The school's last net capacity assessment prior to academisation was 1486, and up until 2011/12 took 243 at NPE
4179	Hele's School	240	240	240	Funding agreement identifies capacity at 210 per year group, but typical operating style has been to admit 240 per year since 2019/20. Funding agreement should be amended in line with RD guidance

4187	Lipson Co-Operative Academy	180	220	180	Determined PAN for 24/25 – 180 Agreed to take 40 additional for 2024/25 Funding agreement identifies capacity as 1377, which is believed to be the last known net capacity assessment before academisation – this would indicate that 240 could be taken per year, the number the school dropped from in 2009/10
4007	Marine Academy Plymouth	240	210	180	Determined PAN for 24/25 – 210 Funding agreement identifies capacity at 180 per year group (1152 including 252 6th form) School used to admit 240 per year group which was dropped in 2009/10 when the school became a sponsored academy and had significant rebuilding/reconfiguration
4605	Notre Dame RC School	140	140	140	Funding agreement – 140
4155	Plymouth High School for Girls	120	120	120	Funding agreement identifies capacity as 120 per year group. Prior to academisation, net capacity assessments used to fluctuate dependant on 6 <sup>th</sup> form numbers due to the school having a number of small classrooms, where the number that could be accommodated was below 30
4180	Plymstock School	300	300	300	Funding agreement identifies whole school capacity at 1680. At point of conversion the school admitted 260 per year group and had 380 6 <sup>th</sup> form places. Moved to 300 places per year group in 2018, first temporarily, then permanently. The school received S106 contribution to add additional accommodation following move to 300 – the secondary allocation from the Saltram Meadow housing development
4178	Plympton Academy	210	210	210	Converted to academy with a whole school capacity of 1350 (210 per year group with 300 6 <sup>th</sup> form). Admitted 180 from 2014/15 in response to reduced numbers. Increased to 210 in 2019/20 but only as the school was significantly redesigned/developed as part of the Priority Building Schools Programme
4172	Sir John Hunt Community Sports College	150	160	150	Determined PAN in 2024/25 – 150 Agreed to take additional 10 for 2024/25 As a maintained school, net capacity assessments place the school's capacity at 150 per year group, with a fluctuating 6 <sup>th</sup> form number.

4002	St Boniface RC College	80	80	136	Determined PAN in 2024/25 – 80 Converted to academy status with a capacity of 929 (including 6 <sup>th</sup> form) as per the last net capacity assessment on the basis that the schools used to admit 136 per year group. Falling numbers saw the school begin to lower the PAN determined to 80, and although it is expected this will continue, the LA must report the funding agreement number.
4190	Stoke Damerel Community College	270	270	240	Determined PAN 2024/25 – 240 Agreed to take an additional 30 for 2024/25 Has taken 270 for the past five years – took 260 in 2018/19 and 270 in 19/20 on request of the LA. All additional 270 admissions were done on their own decision to go over PAN, and not by prior PAN determination 240 on Funding Agreement – minor amendment to FA following an incorrect recording of 6 <sup>th</sup> form numbers.
4186	Tor Bridge High School	210	210	210	Converted to an academy with a capacity of 1400 (210 per year group with 350 6 <sup>th</sup> Form) The school was rebuilt as part of a campus reconfiguration which saw three schools brought together on one site. Any capabilities for expansion were valued engineered out during the rebuild.
4006	Millbay Academy	120	120	120	The all-through school was built in 2014/15 with a secondary capacity of 120 per year group. As there is potential for 60 places being filled from primary moving up, the school initially offers 60 places as a determined PAN – However over the past few years, due to a small number in Y6, the school has agreed to take more than 60 at NPE.
4005	UTC Plymouth	120	120	120	As a UTC, the funding agreement states capacity as 650 – 150 places per year group with a 350 6 <sup>th</sup> form. These are the places available when the KS4 establishment opened from Y10. The FA was not updated when the school moved to a Y9 entry point. The FA's age range was updated when the school moved to a Y7 entry point, but not the capacity figure. Determined PAN for Y7 onwards is 120 in 24/25 and expected to remain as that moving forward.
	<b>TOTAL</b>	<b>3218</b>	<b>3308</b>	<b>3224</b>	
4004	Additional Y9: Scott Medical and Healthcare School	75	75	75	Built to a capacity of 375 when opened in 2017/18 with 75 places in years 9,10 & 11 and 150 places in 6 <sup>th</sup> form

City

	Y7 PAN	Y9 PAN	7	8	9	10	11	Total
<b>2024</b>	<b>3218</b>	<b>3293</b>	<b>3239</b>	<b>3134</b>	<b>3014</b>	<b>2911</b>	<b>2815</b>	<b>15113</b>
<b>2024 as of today</b>	<b>Admit to</b>		<b>3226</b>	<b>3177</b>	<b>3109</b>	<b>3035</b>	<b>2959</b>	<b>15506</b>
	<b>On Roll</b>		<b>3268</b>	<b>3191</b>	<b>3101</b>	<b>2974</b>	<b>2869</b>	<b>15403</b>
<b>2025</b>	<b>3308</b>	<b>3383</b>	<b>3108</b>	<b>3224</b>	<b>3132</b>	<b>2965</b>	<b>2835</b>	<b>15264</b>
2026	3224	3299	3031	3096	3247	3094	2897	15365
2027	3224	3299	3047	3019	3118	3207	3023	15414
2028	3224	3299	2988	3036	3040	3079	3134	15277
2029	3224	3299	2825	2977	3057	3003	3009	14870
2030	3224	3299	2783	2814	2997	3019	2934	14548

7	8	9	10	11	Total
-1%	5%	8%	11%	12%	7%
<b>-1%</b>	<b>0%</b>	<b>0%</b>	<b>2%</b>	<b>3%</b>	<b>1%</b>
<b>6%</b>	<b>0%</b>	<b>7%</b>	<b>9%</b>	<b>14%</b>	<b>7%</b>
6%	6%	1%	8%	11%	7%
5%	6%	8%	3%	10%	7%
7%	6%	8%	9%	5%	7%
12%	8%	7%	9%	11%	9%
14%	15%	9%	8%	11%	10%

Forecast increase 2023/24 to 2026/27	<b>2%</b>	Forecast decrease 2026/27 to 2029/30	<b>-5.6%</b>
Consistently oversubscribed	Eggbuckland Community College Hele's School Devonport High School for Boys Devonport High School for Girls Plymouth High School for Girls		
Full to capacity for the next seven years (including 23/24) based on PAN determinations for 2025/26 continuing for until 2029/2030	Devonport High School for Boys (Based on 180) Devonport High School for Girls (Based on 158) Eggbuckland Community College (Based on 180) Tor Bridge High (Based on 210) Lipson Co-Operative Academy (Based on 180) Plymstock School (Based on 300) Stoke Damerel Community College (Based on 240) UTC Plymouth (Based on 120)		



The above table indicates that from 2025/26, there is surplus in Y7 for the next 3 years, despite the fact that the percentages are all below the desired 8% surplus. However, this surplus is calculated on the FA's. Based on past determinations, if schools were to determine in line with 2024/25 numbers BEFORE the negotiated increases, the total number of places is more likely to be:

DfE	School	Likely PAN
6905	All Saints CE Academy Plymouth	130 (as per original 24/25 determination)
4181	Coombe Dean School	180
5406	Devonport High School for Boys	180
4152	Devonport High School for Girls	158
4185	Eggbuckland Community College	180
4179	Hele's School	240
4187	Lipson Co-Operative Academy	180
4007	Marine Academy Plymouth	210 (as per original 24/25 determination)
4605	Notre Dame RC School	140
4155	Plymouth High School for Girls	120
4180	Plymstock School	300
4178	Plympton Academy	210
4172	Sir John Hunt Community Sports College	150
4002	St Boniface RC College	80
4190	Stoke Damerel Community College	240 (as per original 24/25 determination)
4186	Tor Bridge High School	210
4006	Millbay Academy	60 (as per original 24/25 determination)
4005	UTC Plymouth	120
	<b>TOTAL</b>	<b>3088</b>

If the total places are initially 3088 before negotiation, the surplus amounts for Y7 are as follows:

	Y7 Surplus
2025/26	1.9%
2026/27	1.3%
2027/28	3.2%
2028/29	8.5%
2029/30	9.9%

- These figures indicate that as a LA over the next three years there will need to be additional negotiation undertaken to ensure that there are enough school places for the current Y5,4, & 3 cohorts when they come to join secondary school.
- This is reinforced by the year-on-year increase seen in pupils moving from Y6 to Y7 – there is typically a net increase of pupils when taking into account those crossing the border from Devon and Cornwall into Plymouth for secondary and those crossing from Plymouth into Devon and Cornwall. However, over the past five years, there has been a year-on-year increase from the previous year. In 2019/20, there was a net increase of 1.2%, in 2023/24 this has increased to 6.9%. Although this has been taken into account for forecasting purposes, the LA needs to keep in mind the potential for a continued increase of additional Y7 pupils.

Should the LA want to try and achieve 8% surplus as a buffer for the years 2025/26, 2026/27 and 2027/28, the following numbers of places need to be negotiated:

	Y7 Surplus (based on 3088 places being available)	Additional % required	Additional places required	Additional FE required to cover additional places	Places to be provided	% of year group full	Surplus	Surplus (rounded)
2025/26	1.85%	6.15%	191	7	210	91.89%	8.11%	8%
2026/27	1.30%	6.70%	208	7	210	92.40%	7.60%	8%
2027/28	3.21%	4.79%	149	5	150	92.29%	7.71%	8%

## CROSS BORDER MOVEMENT

As a Local Authority with three grammar schools, Plymouth regularly deals with an increased number of children in Y7 in comparison to the number seen in the previous Y6 cohort. Cross border movement is accounted for, regarding the move from Y6 to Y7 within our forecasting, through our comparison of three-year trend data from Y6 to Y7. However, in the last five years, the number of additional pupils in Y7 from the previous Y6 has increased by over 5%. To account for this change, we have altered our methodology so there is the highest weight on the most recent year's data, followed by the second most recent, to the lowest weight on third most recent year.

Year group movement	Additional pupils	% increase on Y6 cohort
18/19 Y6 to 19/20 Y7	36	1.2%
19/20 Y6 to 20/21 Y7	76	2.6%
20/21 Y6 to 21/22 Y7	130	4.5%
21/22 Y6 to 22/23 Y7	125	4.1%
22/23 Y6 to 23/24 Y7	208	6.9%

This increase has reflected the overall growth in Secondary cohorts as a whole and the similar increase in secondary cohorts reported by our neighbouring LA's. This will be monitored, but the change in methodology will also take into account the forthcoming decline in numbers we are expecting in Plymouth, and in line with the decreasing birth rates seen above, the decline we are expecting across the South West region.

The tables below reflect the position of our neighbouring LA's with regard to pupil numbers and capacity. Although the current published data does not reflect the peak of pupils experienced during this period for Plymouth (and therefore doesn't reflect the same period for our neighbours), it does show for Primary,

- The expectation of more surplus places in Primary in 2024/25 for all SW LA's
- That the primary cohort grew between 2009/10 to what we are expecting in 2024/25 for most LA's

- That all LA's are expecting a smaller primary cohort in 2024/25 compared to 2023/24

LA (& England)	Estimated percentage of spare primary places in 2024/25	Actual Primary numbers 2009/10	Forecast Primary numbers 2024/25	Difference from 09/10 to 24/25	Percentage change in primary numbers from 2009/10 to 2022/23	Anticipated change in primary pupil numbers from 2022/23 to 2024/25
Cornwall	16.9	36175	39785	3610	12.4	-2.2
Devon	18.3	49808	54310	4502	11.0	-1.8
Plymouth	22.2	17743	18668	925	11.8	-5.9
Torbay	17.9	8785	8668	-117	8.7	-9.3
<b>England</b>	<b>14.1</b>	<b>3854572</b>	<b>4369366</b>	<b>514794</b>	<b>15.7</b>	<b>-2.0</b>

And for Secondary,

- On the whole, secondary numbers grew from 2009/10 to 2022/23 (Although Devon shows a slight decline, it is forecast to have the biggest growth from 2022/23 to 2024/25 and an overall increase in number from 09/10 to 24/25)
- That all LA's are expecting to have a larger secondary cohort in 2024/25 compared to 2022/23

LA (& England)	Estimated percentage of spare secondary places in 2024/25	Actual secondary numbers 2009/10	Forecast secondary numbers 2024/25	Difference from 09/10 to 24/25	Percentage change in secondary pupil numbers from 2009/10 to 2022/23	Anticipated change in secondary pupil numbers from 2022/23 to 2024/25
Cornwall	10.2	28768	30692	1924	2.1	4.5
Devon	16.6	37748	38441	693	-2.4	4.3
Plymouth	13.7	14494	15158	664	3.0	1.5
Torbay	8.5	7283	8041	758	10.1	0.3
<b>England</b>	<b>9.0</b>	<b>2820511</b>	<b>3213999</b>	<b>393488</b>	<b>10.5</b>	<b>3.1</b>

[Local authority school places scorecards, Reporting year 2022 – Explore education statistics – GOV.UK \(explore-education-statistics.service.gov.uk\)](https://explore-education-statistics.service.gov.uk)

**Points to note** – This is the latest published reported data for 2022. However, Plymouth data included in this report has been analysed and updated as per information we know, as of this year.

All LA's including Plymouth are showing spare secondary places for 2024/25. However, as we have encountered issues with accessing all these places (as detailed above) it is known that this is not a true reflection of the position in Plymouth. Conversations with other LA's has highlighted that this is an experience being faced by other LA's, particularly Devon.