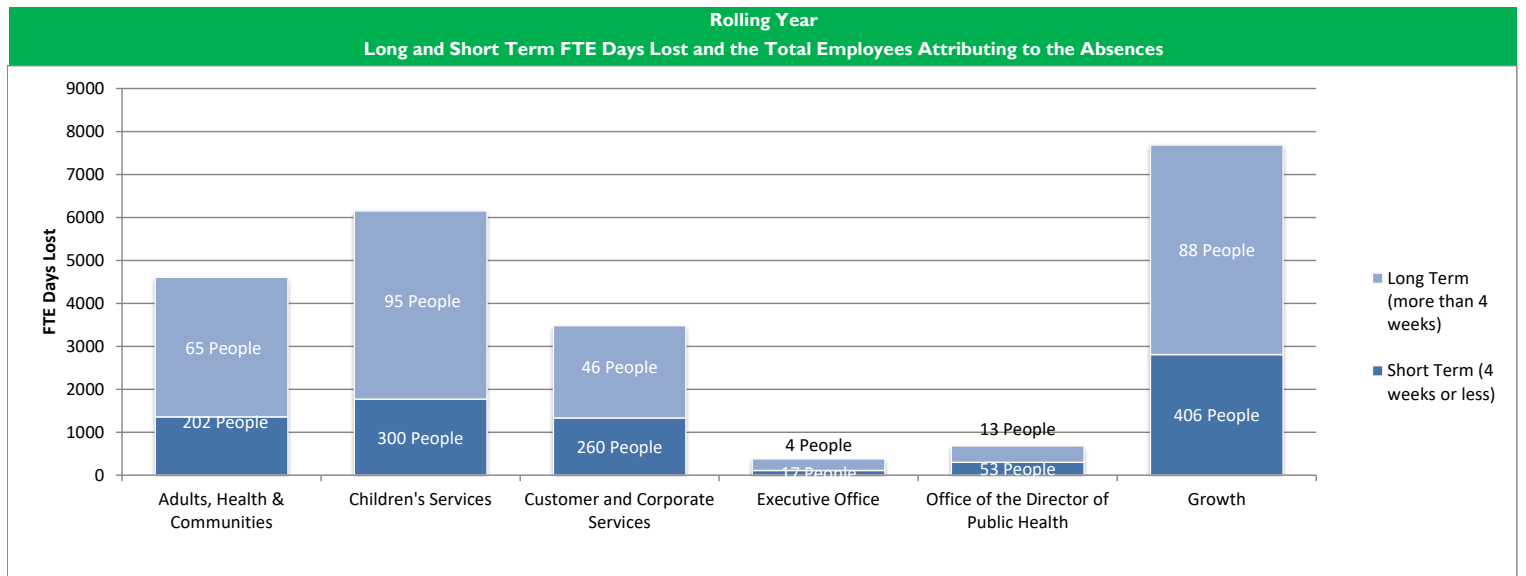


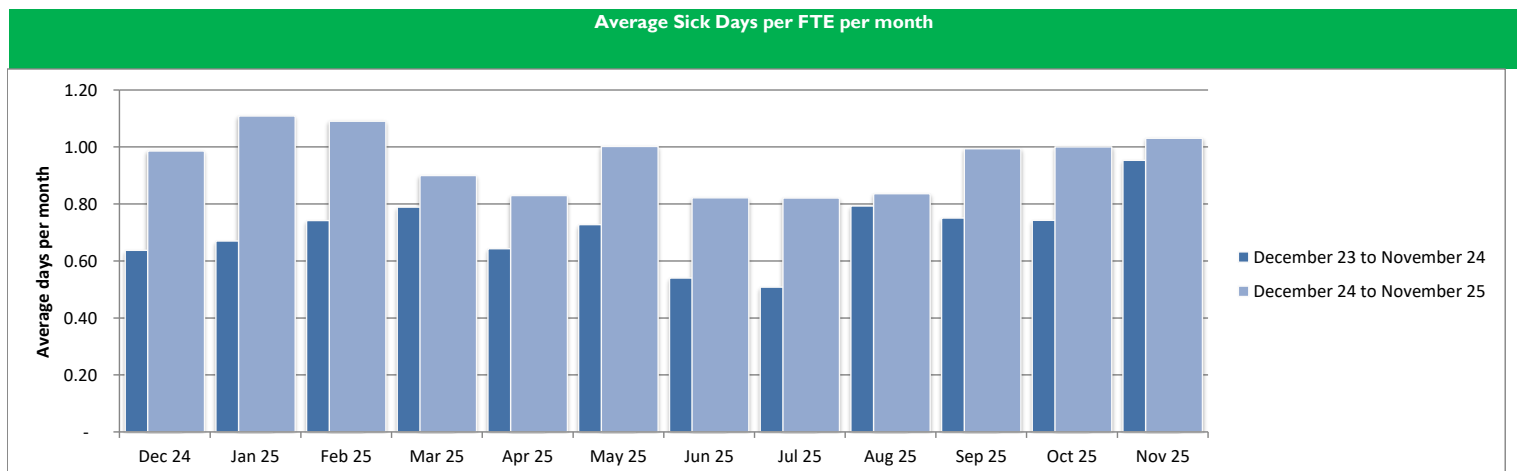
Council Wide Sickness Dashboard (Excludes Schools)

November 2025

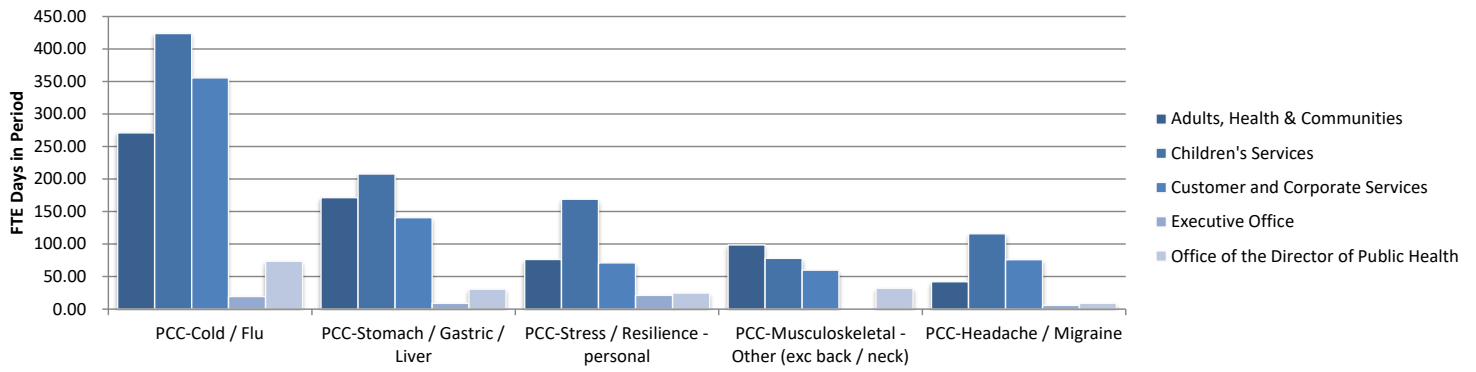
| | Total Number of Days Lost (Rolling Year) | | | | Comparison of Average Days Lost to Directorate Target (Rolling Year) | | | |
|-----------------------------------------|------------------------------------------|--------------------------------------------------------------------------------|---------------------------------|-------------------------|----------------------------------------------------------------------|-----------------------------------|----------------------------|------------------------------------------------------------|
| | Number of FTE Employees | Total Work Days Available (FTE) (Based on calculation, not an exact figure) | Total FTE Days Lost to Sickness | Percentage of Days Lost | Average Days Lost Per FTE (Rolling Year) | Average Days Lost per FTE (Month) | Directorate Target (24/25) | Comparison of Average to Directorate Target (Rolling Year) |
| Directorate | | | | | | | | |
| Adults, Health & Communities | 286.82 | 65,107.47 | 4,607.17 | 7.08% | 16.06 | 1.65 | 7.00 | 9.06 |
| Children's Services | 638.20 | 144,872.53 | 6,149.35 | 4.24% | 9.64 | 1.26 | 7.00 | 2.64 |
| Customer and Corporate Services | 500.63 | 113,643.51 | 3,476.65 | 3.06% | 6.94 | 0.50 | 7.00 | -0.06 |
| Executive Office | 55.41 | 12,577.64 | 378.30 | 3.01% | 6.83 | 0.75 | 7.00 | -0.17 |
| Office of the Director of Public Health | 98.93 | 22,457.54 | 678.22 | 3.02% | 6.86 | 1.28 | 7.00 | -0.14 |
| Growth | 755.91 | 171,591.71 | 7,683.12 | 4.48% | 10.16 | 0.94 | 7.00 | 3.16 |
| Council Wide | 2,335.90 | 530,250.39 | 22,972.81 | 4.33% | 9.83 | 1.03 | 7.00 | 2.83 |



| Average Number of Sick Days per FTE for the rolling year ended: | | | | | | | | | | | | |
|-----------------------------------------------------------------|-------------|-------------|-------------|-------------|-------------|-------------|-------------|-------------|-------------|-------------|-------------|-------------|
| Directorate | Dec 24 | Jan 25 | Feb 25 | Mar 25 | Apr 25 | May 25 | Jun 25 | Jul 25 | Aug 25 | Sep 25 | Oct 25 | Nov 25 |
| Adults, Health & Communities | 13.43 | 14.26 | 15.14 | 16.08 | 15.84 | 15.74 | 15.41 | 15.47 | 16.40 | 14.62 | 16.82 | 16.06 |
| Children's Services | 9.45 | 9.46 | 8.99 | 9.10 | 8.85 | 8.90 | 9.09 | 8.85 | 9.24 | 8.40 | 9.05 | 9.64 |
| Customer and Corporate Services | 7.03 | 7.21 | 7.23 | 7.24 | 6.92 | 6.44 | 6.49 | 6.34 | 6.37 | 5.64 | 6.99 | 6.94 |
| Executive Office | 9.06 | 8.68 | 6.12 | 6.23 | 5.85 | 6.13 | 6.12 | 6.29 | 6.29 | 6.62 | 6.05 | 6.83 |
| Office of the Director of Public Health | 3.87 | 4.56 | 4.77 | 4.46 | 4.65 | 4.59 | 3.04 | 4.98 | 5.78 | 4.64 | 6.32 | 6.86 |
| Growth | 11.04 | 10.73 | 10.65 | 10.23 | 10.26 | 10.07 | 10.40 | 10.09 | 10.36 | 9.31 | 10.13 | 10.16 |
| Council Wide | 9.71 | 9.74 | 9.61 | 9.61 | 9.52 | 9.35 | 9.40 | 9.27 | 9.62 | 8.64 | 9.73 | 9.83 |



Rolling Year
Top 5 Known Reasons for Short Term Absences



Rolling Year
Top 5 Known Reasons for Long Term Absences

