

Natural Infrastructure and Growth Scrutiny Panel



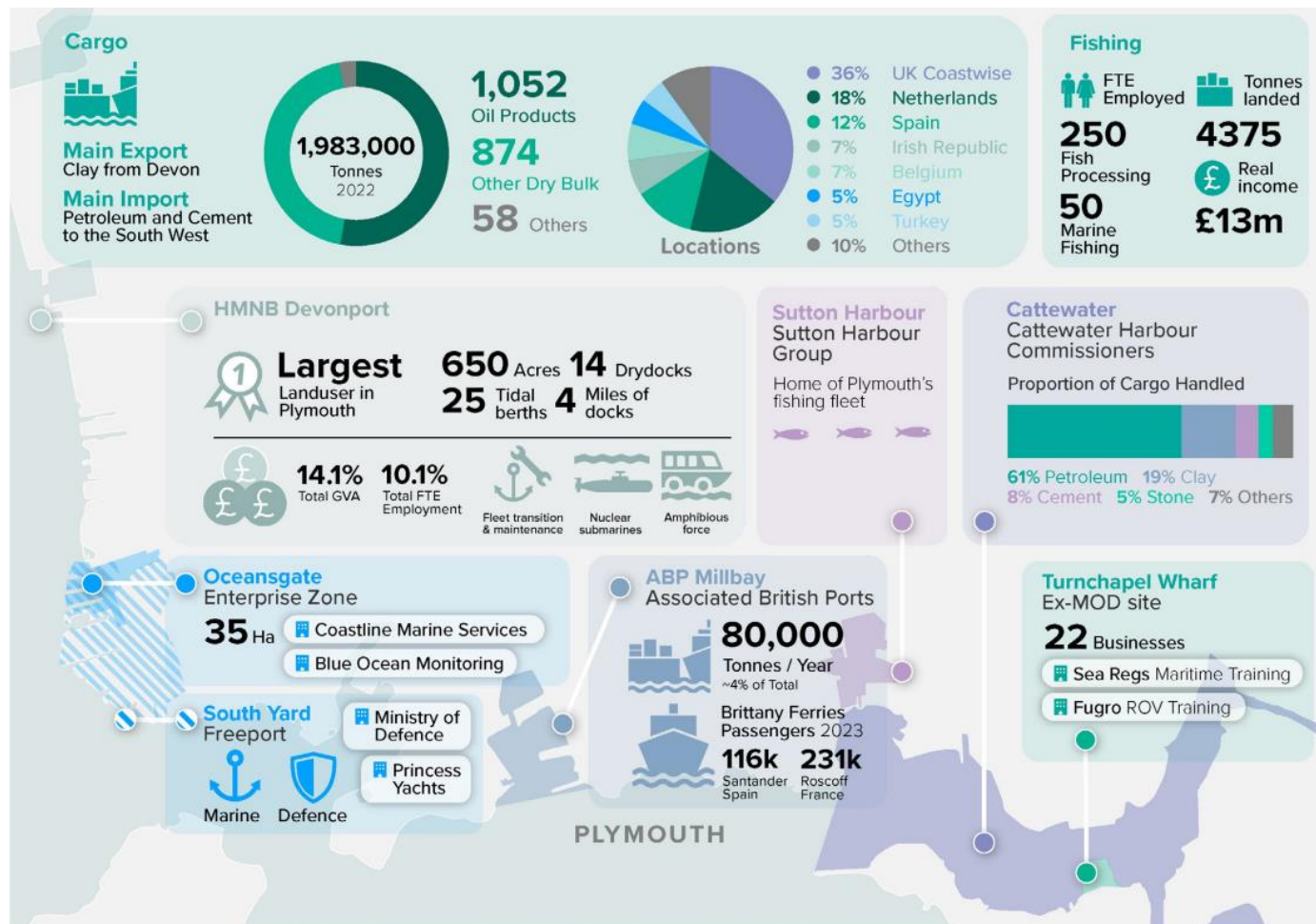
Plymouth Port Strategy Update

29th January, 2026

Plymouth Port: Economic overview



PLYMOUTH
CITY COUNCIL



▲ Source: Mott MacDonald

Plymouth Port: Heritage and landscape



Environmental Designations

 **6402** Ha
Special Area of Conservation

 **1955** Ha
Special Protection Area

 **1530** Ha
Marine Conservation Zone

 **4** Ha
Seagrass Potential Area

Plymouth Sound National Marine Park

 **UK's 1st**
National Marine Park

1000+ 
Species of fish & other marine life

 **£11.6m**
National Lottery funding to...


Monitor & Document Biodiversity


Habitat Reservation


Business Diversification

Heritage

750+ Listed buildings
25 Grade I Listed

 **1660s**
Royal Citadel

1691
Coronation sank in its wreck site



Leisure

1400 
Gold Anchor berths



Cruise liners booked

2018

4

5

12

pandemic
2021

7

2023

12



visitors (2019)

5.2m

local economy worth
334m per year

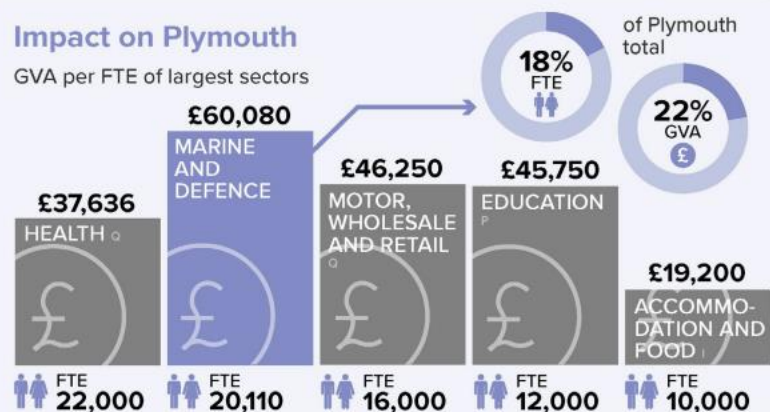


Plymouth Port: Catalyst for growth



Impact on Plymouth

GVA per FTE of largest sectors



Comparison

Marine Employment



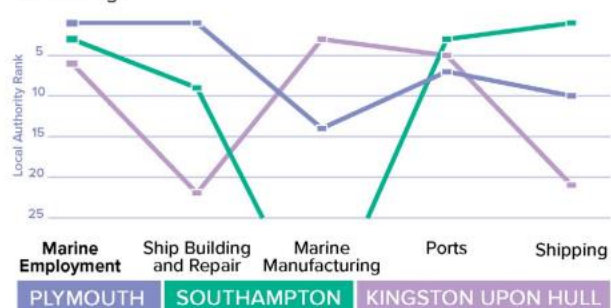
Marine Employment Comparison (FTE)*

- 11,175 Building of Ships, floating structures and repair
- 1,110 Ports, Processing and Handling
- 1,010 Marine Manufacturing
- 250 Shipping and Transport

Hourly Wages



Sector Breakdown of Rankings



*Direct employment, All English LAD. To compare Marine employment against other national local authorities, selected SICs have been picked to remove the risk of non-marine based employment, reducing recorded employment. Defence has not been included

Plymouth Port: Opportunity overview



- Develop Local Skills
- Maintain Plymouth's Expertise and Innovation
- Invest in Infrastructure
- Preserve Space for Ports
- Foster Communication and Collaboration
- Prepare for Net Zero



Case Study: Cruise Partnership



https://youtu.be/JGL66VOit_k

Next steps



- Establish Plymouth Port Coordination Group
- Formalise reporting and governance for this under the Plymouth Economic Strategy

Questions?